



Absorption Plus® *Imagine* Panels

Description

Imagine acoustical panels allow total design flexibility with high resolution imaging for acoustical wall, ceiling, cloud, baffle and tack panels. Standard panels are composed of a semi-rigid fiberglass core board with a minimum of 25% recycled glass content. Panel edges are available plain or chemically hardened for greater durability. The imaged acoustical facing material is bonded to the panel using a low VOC water based adhesive. Standard and optional panel facings are available from a range of industry leading manufacturers. *Imagine* panel visual options are endless and can include: wood, stone, brick, tile, marble, nature scene, logo, portrait, structure etc.

Absorption Plus Features / Benefits

- Panel image flexibility for desired visual impact
- Superior acoustic performance enhances room acoustics through reduced reverberation.
- Custom fabricated panels provide unlimited size, shape, (geometric and curved capability) thickness and edge detail.
- Standard 100% polyester faced composite panels are Class A fire rated per ASTM E84 providing a fire safe interior finish material per code requirements.
- *Imagine* insulation panels can also save energy.
- *Imagine* panel lead time is 4 - 6 weeks after image approval.
- Panels ship in durable wood crates, virtually eliminating damage, claims and resulting project delays.
- Mounting options to suit any application requirement.

Absorption Plus Availability

Absorption Plus *Imagine* looks can be applied to our full line of other Absorption Plus panels.

Standard Panel Sizes: 1, 1½, 2" thick, up to 4' wide and 10' long

Edge Treatments: Square, Bevel, Chamfer and Radius, plain or chemically hardened

Absorption Plus acoustical panels are available through a network of FBM-SPI locations across North America.

Additional product information at www.spi-co.com



Imagine wood plank panels provide the rich look of real wood while providing excellent acoustics and energy saving thermal insulation.

Performance Compliance Data

Base Board: Complies to ASTM E84 / UL 723 - Flame Spread 25, Smoke Developed 50, Class A fire rated

SCS Certified - Minimum 25% Recycled Content

Thermal Resistance: R Value 4.3 per inch at 75°F Mean Temp.

Nominal Density: 6 - 7 pcf

Facings: include 100 % polyester fabric such as Guilford of Maine FR701, and other industry leading manufacturers.

Adhesive: Water based fire retardant, low emitting VOC complying with LEED™ IEQ Credit 4.1

ASTM E84 - Flame Spread 5, Smoke Developed 0
(Properties as reported by manufacturers)

Sound Absorption Coefficients, Mounting Type A
per ASTM C423 and ASTM E795 (Composite panel)

Thickness inches (mm)	Frequency, Hz							NRC
	125	250	500	1000	2000	4000		
1 (25)	0.05	0.30	0.72	1.01	1.09	1.02	0.80	
1 1/2 (38)	0.14	0.52	1.04	1.14	1.06	1.02	0.95	
2 (51)	0.31	0.79	1.18	1.22	1.08	1.07	1.05	



Absorption Plus *Imagine* Panels

The following image samples are provided to stimulate project ideas. Any appropriate high resolution image can be used for field or focal point panels.

Note: finished panel size influences ultimate image resolution.

Dark Plank



Weathered Plank



Gray Weathered Plank



Wood Timbers



Dark Walnut



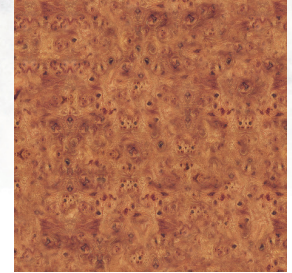
Tree Bark



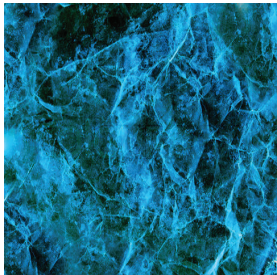
Bamboo



Walnut Burl



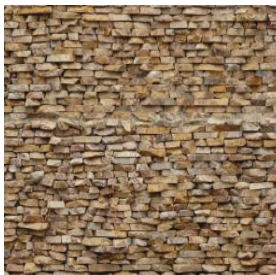
Old Marble



Random Stone Wall



Course Stone Wall



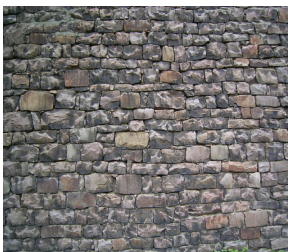
Loose Stone Wall



Gray Stone Wall



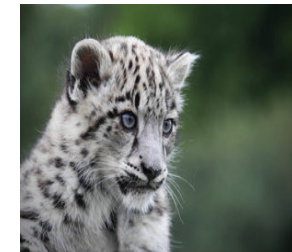
Stone Wall



Tropical Water Fall



Snow Leopard



Note: image colors may vary from actual imagined panel colors.



SPI Specialty Products & Insulation
c/o Dune Point Capital
411 Theodore Fremd Ave.
Rye, NY 10580
Phone: (855) 519-4044
Web: www.spi-co.com
E-mail: fabteam@spi-co.com
January 2019 - Imagine Panels



Disclaimer and Limitation of Warranty. The purchaser/user is advised to consult with the appropriate professionals and to read the manufacturer's product information to determine the adequacy or appropriateness of the product for the use intended. SPI makes no claim or representation regarding the use or applicability of the products. Further, SPI makes no warranty, expressed or implied, and disclaims all warranties including warranties of merchantability and fitness for a particular purpose.

For additional information visit
<http://www.spi-co.com>

Please ask your SPI Sales Representative about
other fabrication products and services.