

PG Board TAF™

**Thermal, Acoustic and
Fire Resistant Insulation
System**

PG BOARD "TAF" (Parking Garage, Mechanical, Electrical & Utility Rooms, Loading Docks..)

Provides:

- Thermal insulation, required by CODE, below occupied spaces for energy savings
 - Improves Acoustics (w/ optional Perf. facer for sound absorption)
 - Fire resistant, non-combustible panels enhance assembly fire performance
 - Also, 85% light reflectance improves lighting efficiency for savings
- A sound environmental choice!**

Typical Garage



Garage w/ PG Board TAF



An Alternative to grid & tile systems

Note: Interior garage area allowable lighting wattage is limited under IEEC Model Code
Allowable Range from 0.14 - 0.15 Watts / SF

PG Board TAF™



PG Board TAF™

Description

PG Board TAF is made of environmentally sustainable mineral wool insulation produced from basalt rock and slag. The resulting non-combustible insulation provides exceptional thermal and acoustic properties. The lightweight insulation board is water repellent yet vapor permeable. Also with a melt point of approximately 2150°F, it provides superior fire resistance.

The bright white facing (silver optional) reflects light to brighten and enhance garage environments which can reduce lighting costs. An optional perforated faced product is available for applications where enhanced acoustics is desired (refer to perf. datasheet for additional information).

Panel are easily installed over concrete, metal corrugated deck and other substrates using common tools and attachments.

Uses

PG Board TAF is installed to reduce energy losses and improve the comfort of occupied space above parking garage, mechanical, and electrical rooms or other unconditioned space. The bright white panel finish improves space lighting levels which can reduce lighting energy costs.

Advantages

- Thermal Effectiveness - Stable R Value of 16.4 at 4" thick.
- Sound Absorption - Excellent acoustic performance.
- Fire Resistance - Faced composite Class A, 20/25 rating
- Finished Appearance - Attractive, clean and bright. Can reduce lighting energy costs.
- LEED® - Can earn LEED points across four key categories toward sustainable development.
- Ease of Application - Prefinished panels install quick and easy.
- Availability - Typically 2-6 weeks ARO

Standard Dimensions

1.5 - 8" thick, 24" x 48" panels (can achieve R Values up to 32.8 in a single layer system).

Learn more at www.spi-co.com



SPI - Specialty Products & Insulation
C/O Dunes Point Capital
411 Theodore Fremd Ave., Rye, NY 10580
Phone: (855) 519 - 4044
Web: www.spi-co.com
E-mail: fabteam@spi-co.com
November 2018 - Foam PG Board TAF



PG Board TAF with standard white finish provides effective thermal insulation, acoustic performance, documented composite fire resistance with Flame Spread 20, Smoke Development 25. The bright white finish can reduce lighting energy costs.

Performance Compliance Data

PG Board TAF is produced with Rockwool® stone wool insulation and a controlled facing lamination process that is under laboratory follow-up audits. Finished panels carry the listing lab mark as a composite Class A fire rated product per ASTM E-84.

Base Board: Semi-rigid stone wool insulation
Maximum Service Temperature (per ASTM C612) 1200°F
Density: Nominal 4 lb. per ASTM C303 (other densities available)

Fire Performance:
Non-Combustible: per ASTM E136, Behavior of Materials at 750°C (1382°F)
Non-Combustible: per CAN4 S114, Test for Non-Combustibility

Surface Burning Characteristics:
Per ASTM E 84 (UL723) Flame spread 0, Smoke Development 0
Per CAN/ULC S102 Flame Spread 0, Smoke Development 0
Thermal Resistance: per ASTM C-518 (C177)
R-value/inch @ 75°F, 4.1 hr.ft²/F/Btu

Moisture Resistance: per ASTM C1104, Moisture Sorption, 0.03%
Fungi Resistance: per ASTM C1338, Passed

Sound Absorption: per ASTM C423, **Coefficients at Frequencies:**
Thickness: 125 Hz 250 Hz 500 Hz 1000 Hz 2000 Hz 4000 Hz NRC
2" 0.26 0.68 1.14 1.13 1.06 1.07 1.00
3" 0.62 1.03 1.20 1.10 1.08 1.10 1.10
4" 1.07 1.01 1.07 1.06 1.07 1.06 1.05

PSF (polypropylene / scrim / foil) paper free facing):
Reinforced bright white facer (optional silver facing)
Mold Resistance: per ASTM C665 / C1338 No Growth
Light Reflectance: per ASTM C523 85%
Permeance: per ASTM E96 0.02 Per

Disclaimer and Limitation of Warranty. The purchaser/user is advised to consult with the appropriate professionals and to read the manufacturer's product information to determine the adequacy or appropriateness of the product for the use intended. SPI makes no claim or representation regarding the use or applicability of the products. Further, SPI makes no warranty, expressed or implied, and disclaims all warranties including warranties of merchantability and fitness for a particular purpose.

For additional information visit
www.spi-co.com
Ask your Sales Representative about other
value add products and services.

With Non-Perf. Finish

- Saves energy
- Stable R value (up to R38)
- Fire resistant, withstands temperatures up to approx. 2150°F
- Dimensionally stable
- Bright white paper free finish
- Vapor barrier
- Easy to install!

With Optional Perf. Facing

With Perforated Facing:

- Saves energy
- Stable R value (up to R38)
- Fire resistant, withstands temperatures up to approx. 2150°F
- Dimensionally stable
- Enhanced sound absorption
- Bright white paper free finish
- Vapor permeance
- Easy to install!

The only product w/ Perf. face



PG Board TAF™ (Perf.)

Description

PG Board TAF (Perf.) is made of environmentally sustainable mineral wool insulation produced from basalt rock and slag. The resulting non-combustible insulation provides exceptional thermal and acoustic properties. The lightweight insulation board is water repellent yet vapor permeable. Also with a melt point of approximately 2150°F, it provides superior fire resistance.

The bright white facing (silver optional) reflects light to brighten and enhance garage environments which can reduce area lighting costs. The perforated facing is offered for applications where enhanced acoustic performance is desired.

Panel are easily installed over concrete, metal corrugated deck and other substrates using common tools and attachments.

Uses

PG Board TAF (Perf.) is installed to reduce energy losses and improving the comfort of occupied space above parking garage, mechanical, electrical room or other unconditioned space. The bright white panel finish improves space lighting levels which can reduce lighting energy costs.

Advantages

- Thermal Effectiveness - Stable R Value, 16.4 per 4" thick.
- Sound Absorption - Excellent acoustic performance.
- Fire Resistance - Composite Class A, 20/25 rating
- Finished Appearance - Attractive, clean and bright. Can reduce lighting energy costs.
- LEED® - Can earn LEED points across four key categories toward sustainable development.
- Ease of Application - Prefinished panels install quick and easy.
- Availability - Typically 2-6 weeks ARO

Standard Dimensions

1.5 - 8" thick, 24" x 48" panels (can achieve R Values of up to 32.8 in a single layer system).

Learn more at www.spi-co.com



SPI - Specialty Products & Insulation
C/O Dunes Point Capital
411 Theodore Fremd Ave., Rye, NY 10580
Phone: (855) 519-4044
Web: www.spi-co.com E-mail: fs@spi-co.com
November 2018 - Form PG Board TAF (Perf)



PG Board TAF (Perf.) with perforated bright white face provides thermal insulation, documented acoustic and composite fire resistance with 20/25 Flame Spread and Smoke Development.

Performance Compliance Data

PG Board TAF (Perf.) is produced with Rockwool® stone wool insulation using a controlled lamination process under laboratory follow-up audits. Finished panels carry the listing lab mark as a composite Class A fire rated product per ASTM E-84.

Base Board: Semi-rigid stone wool insulation
Maximum Service Temperature (per ASTM C612) 1200°F
Density: Nominal 4 lb. per ASTM C303 (other densities available)
Fire Performance:
Non-Combustible: per ASTM E136, Behavior of Materials at 750°C (1382°F)
Non-Combustible: per CAN4 S114, Test for Non-Combustibility
Surface Burning Characteristics:
Per ASTM E 84 (UL723) Flame spread 0, Smoke Development 0
Per CAN/ULC S102 Flame Spread 0, Smoke Development 0
Thermal Resistance: per ASTM C-518 (C177)
R-value/inch @ 75°F, 4.1 hr.ft².F/Btu
Moisture Resistance: per ASTM C 1104, Moisture Sorption, 0.03%
Fungi Resistance: per ASTM C1338, Passed
Sound Absorption: per ASTM C423, Type A Mounting, ASTM E795-05
Coefficients at Frequencies

Thickness	125 Hz	250 Hz	500 Hz	1000 Hz	2000 Hz	4000 Hz	NRC	SAA
4" Perf.	1.10	0.76	0.64	0.74	0.75	0.58	0.70	0.71

PSF (polypropylene / scrim / foil) paper free facing):
Reinforced white facer (optional silver facing)
Mold Resistance: per ASTM C665 / C1338 No Growth
Light Reflectance: per ASTM C523 85%
Permeance: per ASTM E96 >10 Perm

Disclaimer and Limitation of Warranty. The purchaser/user is advised to consult with the appropriate professionals and to read the manufacturer's product information to determine the adequacy or appropriateness of the product for the use intended. SPI makes no claim or representation regarding the use or applicability of the products. Further, SPI makes no warranty, expressed or implied, and disclaims all warranties including warranties of merchantability and fitness for a particular purpose.

For additional information visit
www.spi-co.com
Ask your Sales Representative about other
value add products and services.

Thermal Insulation

- Uninsulated concrete or framed parking deck systems readily transfer exterior air temperatures to above conditioned space
- **Model Energy Code (IECC)** requires insulation of garage decks when above space is conditioned
- PG Board TAF provides a stable R Value of 4.1 per inch
- At a thickness of 7.5" provides an R value of 30.8 in a single layer system
- Can supply up to R 38, 2 layers 9.5" total system thickness



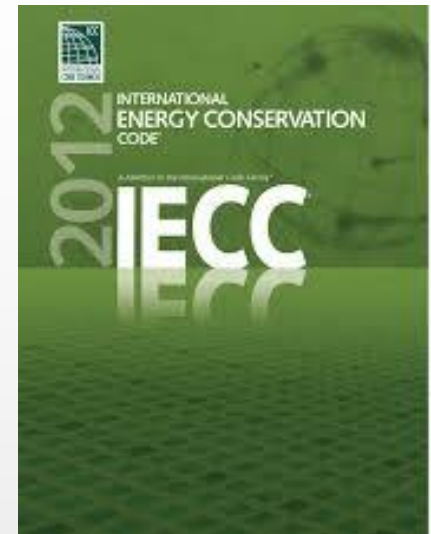
Related Code Sections **(CODE = REQUIRED)**

•IECC Section 402.2 - Floors over outdoor air or unconditioned space.

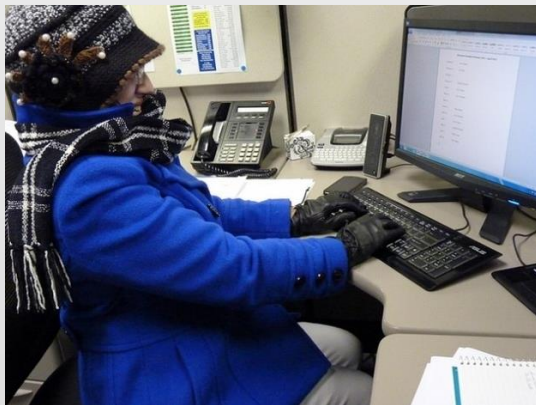
(Requirement for thermal Insulation)

- **Ref. Table C402.2 for insulation R Value required.**

(Ranges from R 6.3 to R 38 per construction type and climate zone)



Winter

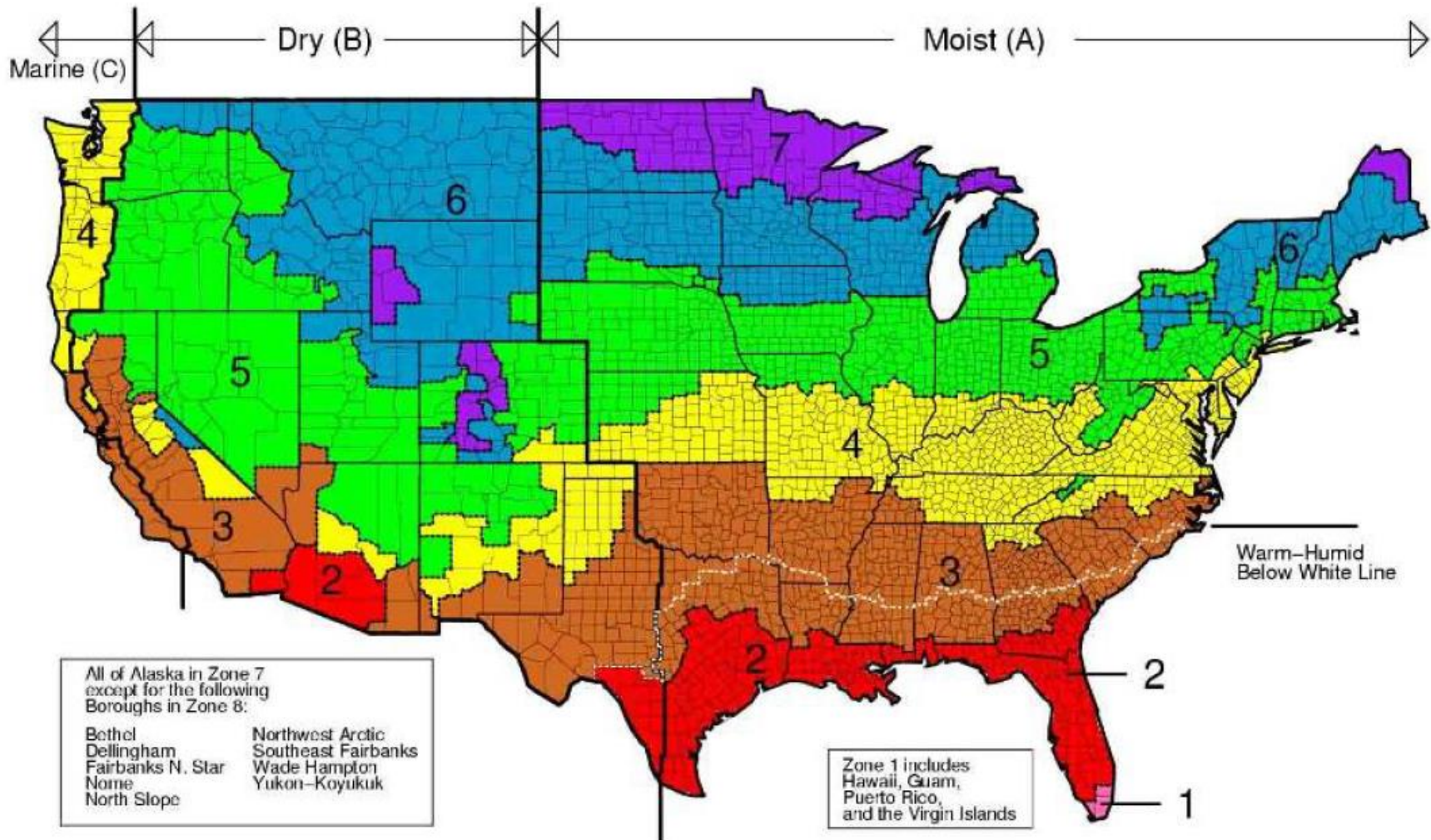


Summer



Climate Zones

2012 IECC - Chapter 3



Determining Your Climate Zone is the First Step in the Process

Chapter 5 Prescriptive Approach Compliance

TABLE C402.2
OPAQUE THERMAL ENVELOPE REQUIREMENTS*

CLIMATE ZONE	1		2		3		4 EXCEPT MARINE		5 AND MARINE 4		6		7		8	
	All Other	Group R	All Other	Group R	All Other	Group R	All Other	Group R	All Other	Group R	All Other	Group R	All Other	Group R	All Other	Group R
Floors																
Insulation entirely above deck	R-20ci	R-20d	R-20ci	R-20ci	R-20d	R-20ci	R-25ci	R-25d	R-25ci	R-25ci	R-30d	R-30ci	R-35ci	R-35d	R-35ci	R-35ci
Metal buildings (with R-5 thermal blocks) ^{b,c}	R-19 + R-11.1.S	R-19 + R-11.1.S	R-19 + R-11.1.S	R-19 + R-11.1.S	R-19 + R-11.1.S	R-19 + R-11.1.S	R-19 + R-11.1.S	R-19 + R-11.1.S	R-19 + R-11.1.S	R-19 + R-11.1.S	R-25 + R-11.1.S	R-25 + R-11.1.S	R-30 + R-11.1.S	R-30 + R-11.1.S	R-30 + R-11.1.S	R-30 + R-11.1.S
Attic and other	R-38	R-38	R-38	R-38	R-38	R-38	R-38	R-38	R-38	R-38	R-49	R-49	R-49	R-49	R-49	R-49

FLOORS

Climate Zone	1	2	3	4 Except Marine	5 And Marine 4	6	7	8								
Mass	NR	NR	R-6.3ci	R-8.3ci	R-10ci	R-10ci	R-10ci	R-10.4ci	R-10ci	R-12.5ci	R-12.5ci	R-12.5ci	R-15ci	R-16.7ci	R-15ci	R-16.7ci
Joist/ Framing Steel/ (Wood)	NR	NR	R-30	R-30	R-30	R-30	R-30	R-30	R-30	R-30	R-30	R-30	R-30	R-30	R-30	R-30

Unheated slabs	NR	NR	NR	NR	NR	NR	NR	R-10 for 24" below	R-10 for 24" below	R-10 for 24" below	R-10 for 24" below	R-10 for 24" below	R-15 for 24" below	R-15 for 24" below	R-15 for 24" below	R-15 for 24" below
Heated slabs ^d	R-7.5 for 12" below	R-7.5 for 12" below	R-7.5 for 12" below	R-7.5 for 12" below	R-10 for 24" below	R-10 for 24" below	R-10 for 24" below	R-15 for 24" below	R-15 for 24" below	R-15 for 36" below	R-15 for 36" below	R-15 for 36" below	R-20 for 48" below	R-20 for 24" below	R-20 for 48" below	R-20 for 48" below
Opaque Doors																
Swinging	U-0.61	U-0.61	U-0.61	U-0.61	U-0.61	U-0.61	U-0.61	U-0.61	U-0.61	U-0.37	U-0.37	U-0.37	U-0.37	U-0.37	U-0.37	U-0.37
Roll-up or sliding	R-4.75	R-4.75	R-4.75	R-4.75	R-4.75	R-4.75	R-4.75	R-4.75	R-4.75	R-4.75	R-4.75	R-4.75	R-4.75	R-4.75	R-4.75	R-4.75

For SI, 1 inch = 25.4 mm. d = Continuous insulation. NR = No requirement.

- a. Linear System—A continuous membrane installed below the purlins and uninterrupted by framing members. Uncompressed, unfaced insulation rests on top of the membrane between the purlins.
- b. Assembly descriptions can be found in ANSI/AIAA/IESNA Appendix A.
- c. Where using R-value compliance method, a thermal spacer block shall be provided, otherwise use the U-factor compliance method in Table C402.1.2.
- d. R-5.7ci is allowed to be substituted with concrete block walls complying with ASTM C 90, ungrouted or partially grouted at 32 inches or less on center vertically and 48 inches or less on center horizontally, with ungrouted cores filled with materials having a maximum thermal conductivity of 0.44 Btu-in/h²-°F.
- e. Where heated slabs are below grade, below-grade walls shall comply with the exterior insulation requirements for heated slabs.
- f. Steel floor joist systems shall be insulated to R-38.

f. Steel floor joist systems shall be insulated to R-38.

Related Code Sections **(CODE = REQUIRED)**

IBC 2012 (same ref. in 2009, 2003)

720.3 Exposed installation. Insulating materials, where exposed as installed in buildings of any type of construction, shall have a flame spread index of not more than 25 and a smoke-developed index of not more than 450.



2018 IBC Important Updates



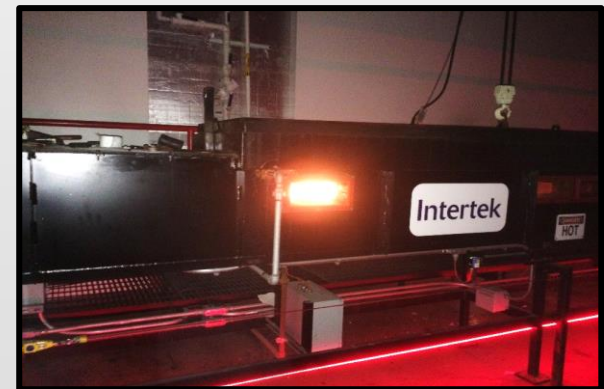
720.1 General. **P**

Insulating materials shall comply with the requirements of this section. Where a flame spread index or a smoke-developed index is specified in this section, such index shall be determined in accordance with ASTM E84 or UL 723. Any material that is subject to an increase in flame spread index or smoke-developed index beyond the limits herein established through the effects of age, moisture or other atmospheric conditions shall not be permitted. Insulating materials, when tested in accordance with the requirements of this section, shall include facings, when used, such as vapor retarders, vapor permeable membranes and similar coverings, and all layers of single and multilayer reflective foil insulation and similar materials.

IMPORTANT: This CODE change clearly blocks products with only “component” test data

PG Board TAF - Fire Tested Proven Performance

- PG Board TAF's high temperature fire resistance combined with exceptional 20/25 Flame Spread and Smoke Development ratings are well below CODE maximum allowable for exposed insulation
- These properties can assist patrons, facility personnel and emergency responders with evacuations and help minimize the spread of fire, toxic smoke and superheated gases to nearby vehicles and adjacent structures
- Due to PG Board TAF's exceptional fire resistance it can also provide added protection to deck structures reducing or eliminating costly repairs



Outstanding Thermal, Acoustic and Fire Resistance

Unmatched performance!



Product Labeling

- IBC Code Requires Class A Rating for Exposed Insulation
- Independent Laboratory Testing Confirms PG Board TAF CODE Compliance
- PG Board TAF, 20/25 Flame Spread & Smoke Development Per ASTM E84

Sample Label



PG BOARD TAF™ INSULATION SYSTEM

___" x 24" x 48" - White PSF Finish

___ Plain ___ Perforated

Insulation System is Certified To: ASTM E84 FSI <25, SDI <450

Manufacture Location: Lancaster, PA (800) 441- 8172, Manufacture Date: _____



Intertek
C# 5008357



Refer to the Intertek Directory of Building Products (<https://bpdirectory.intertek.com>) for detailed information

www.spi-co.com



Vehicle Fires (Vehicle loss, Facility Structural Damage)

National Fire Protection Association (NFPA) Study, "U.S. Vehicle Fire Trends and Patterns" reported yearly average **267,600 vehicle fires**. (June 2010)



Fire temperatures followed by cooling hose stream exposure can cause destructive spalling to structural concrete.



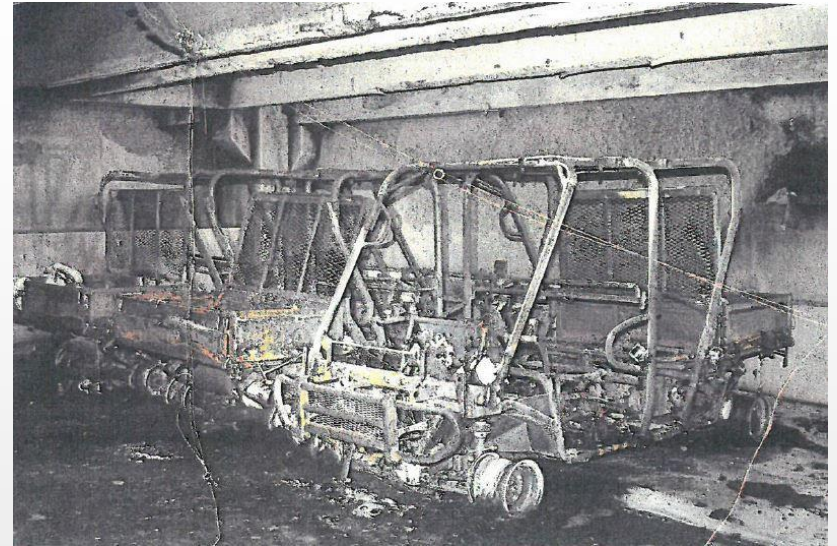
Feb 13, 2017 Disneyland garage Fire



April 11, 2017 Virginia Beach Parking Garage Fire

Starting Thursday, the five-story city-owned garage will be closed for a week to repair \$420,000 worth of damage caused by the fire.

Construction workers will use a 300-ton crane to remove sections of burned concrete and debris from the top floors.



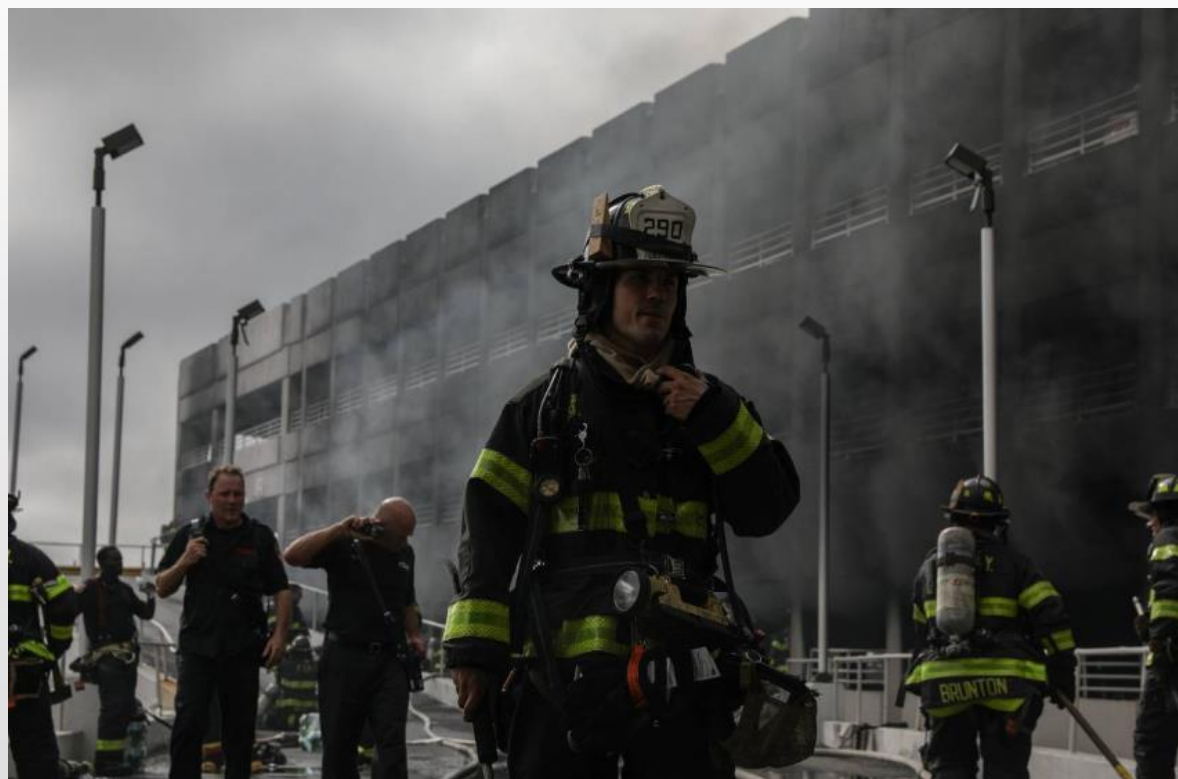
4 Virginia Beach business ATV vehicles torched

Being non-combustible and fire resistant up to 2150°F, PG Board TAF can reduce concrete exposure temperatures minimizing structural damage and repair costs

Brooklyn, NY Kings Point Mall - Parking Garage Fire Sept 17, 2018

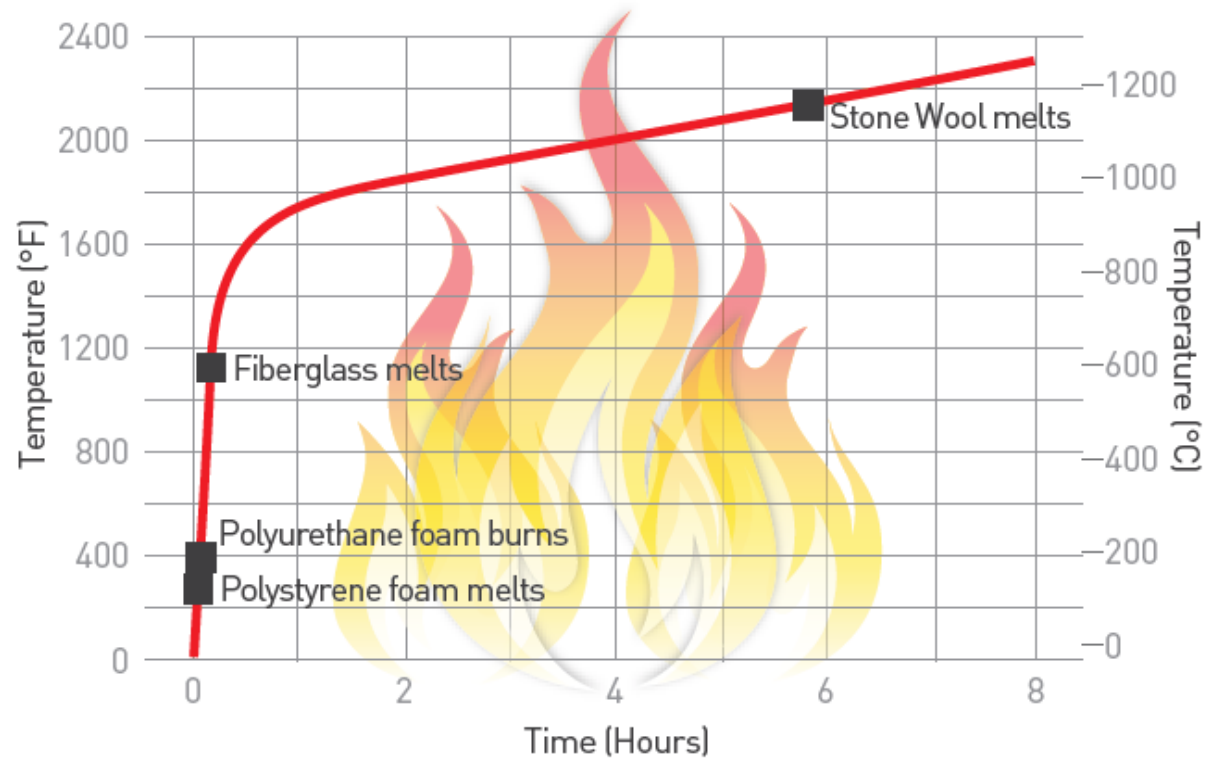
Suspected Arson, 50 people suffered non-life-threatening injuries, including 6 civilians who were treated for smoke Inhalation. 20-30 cars were destroyed, as many as 120 damaged.

The garage was being checked for possible structural damage.



PG Board TAF - Stone Wool Documented Performance

Temperature Development in a Standard Fire (ASTM E119)



Acoustic Insulation

- Vehicle engine and exhaust noise, screeching tires, doors slams and horn blasts in typically reverberant space creates an uncomfortable environment. This noise can impact adjacent spaces
- The fiber structure and density of PG Board TAF can provide sound damping and absorption
- PG Board TAF is available with a perforated facing when sound absorption or vapor permeance is specified.





PG Board TAF™ (Perf.)

Description
 PG Board TAF (Perf.) is made of environmentally sustainable mineral wool insulation produced from basalt rock and slag. The resulting non-combustible insulation provides exceptional thermal and acoustic properties. The lightweight insulation board is water repellent yet vapor permeable. Also with a melt point of approximately 2150°F, it provides superior fire resistance. The bright white facing (three options) reflects light to brighten and enhance garage environments which can reduce area lighting costs. The perforated facing is offered for applications where enhanced acoustic performance is desired. Panels are easily installed over concrete, metal corrugated deck and other substrates using common tools and attachments.

Uses
 PG Board TAF (Perf.) is installed to reduce energy losses and improve the comfort of occupied space above parking garage, mechanical, electrical room or other unconditioned space. The bright white panel finish improves space lighting levels which can reduce lighting energy costs.

Advantages

- Thermal Effectiveness - Stable R Value, 16.4 per 4" thick.
- Sound Absorption - Excellent acoustic performance.
- Fire Resistance - Composites Class A, 20" 23 rating.
- Finished Appearance - attractive, clean and bright. Can reduce lighting energy costs.
- LEED® - Can earn LEED points across four key categories toward sustainable development.
- Ease of Application - Prefinished panels install quick and easy.
- Availability - Typically 2-6 weeks AEO

Standard Dimensions
 1.5 - 8" thick, 24" x 48" panels (can achieve R Values of up to 32.8 in a single layer system).

Learn more at www.spi-co.com

SPi Specialty Products & Insulation
 C/O Duane Point Capital
 411 Theodore Fremd Ave., Rye, NY 10580
 Phone: 914.339.4000
 Web: www.spi-co.com E-mail: info@spi-co.com
 November 2016 - Form PG Board TAF (Perf.)



For additional information visit www.spi-co.com
 Ask your Sales Representative about other value add products and services.



PG Board TAF (Perf.) with perforated bright white face provides thermal insulation, documented acoustic, and composite fire resistance with 20" 23 Flame Spread and Smoke Development.

Performance Compliance Data
 PG Board TAF (Perf.) is produced with Rockwool® stone wool insulation using a controlled lamination process under laboratory follow-up audit. Finished panels carry the long life mark as a composite Class A fire rated product per ASTM E-24.

Base Board: Semi-rigid stone wool insulation
Maximum Service Temperature (per ASTM C412) 1200°F
Density: Nominal 4 lb. per ASTM C393 (other densities available)

Fire Performance:
Non-Combustible: per ASTM E136, Behavior of Materials at 750°C (1382°F)
Non-Combustible: per CAN4 S114, Test for Non-Combustibility

Surface Burning Characteristics:
Per ASTM E 84 (UL723) Flame spread 0, Smoke Development 0
Per CANULC S102 Flame Spread 0, Smoke Development 0

Thermal Resistance: per ASTM C-518 (C177) R-value/inch @ 75°F, 4.1 hr·ft²·F/Btu
Moisture Resistance: per ASTM C 1104, Moisture Sorption, 0.03%
Fungal Resistance: per ASTM C1338, Pined

Sound Absorption: per ASTM C423, Type A Mounting, ASTM E795-05
Coefficient of Expansion: 2000 Hz: 4000 Hz: NRC: SAA
 4" Perf: 1.0 0.76 0.64 0.74 0.73 0.58 0.70 0.71

FFF (non-petroleum / scrim / foil) paper free facing:
Reinforced white face: (optional silver facing)
Mold Resistance: per ASTM C665 / C1330 No Growth
Light Reflectance: per ASTM C523 88%
Permeance: per ASTM E916 >10 Perm

Disclaimer and Limitation of Warranty: The purchaser/user is advised to consult with the appropriate professionals and to read the manufacturer's product information to determine the adequacy or appropriateness of the product for the use intended. SPI makes no claim or representation regarding the use or applicability of the product. Further, SPI makes no warranty, expressed or implied, and disclaims all warranties including warranties of merchantability and fitness for a particular purpose.

Related Code Sections (CODE = MINIMUM REQUIRED)

•**1207.2 Air-borne sound.** Walls, partitions and floor/ceiling assemblies separating dwelling units from each other or from public or service areas shall have a sound transmission class (STC) of not less than 50 (45 if field tested) for air-borne noise when tested in accordance with ASTM E 90. Penetrations or openings in construction assemblies for piping; electrical devices; recessed cabinets; bathtubs; soffits; or heating, ventilating or exhaust ducts shall be sealed, lined, insulated or otherwise treated to maintain the required ratings.

•**1207.3 Structure-borne sound.** Floor/ceiling assemblies between dwelling units or between a dwelling unit and a public or service areas within the structure shall have an impact insulation class (IIC) rating of not less than 50 (45 if field tested) when tested in accordance with ASTM E 492.



PG Board TAF Documented Acoustic Performance


- **PG Board TAF (Perf)** acoustical performance is documented by laboratory testing
- Solid sound absorption with an NRC value of 0.70 at 4" thickness with the optional perforated facing
- This acoustic performance can substantially improve acoustics in typical reverberant space and reduce noise levels in adjacent spaces

***Outstanding Thermal insulation, Acoustics and Fire Resistance
Unmatched performance!***



Environmentally Sustainability / LEED

- Made from environmentally sustainable mineral wool insulation produced from basalt rock & slag
- CFC and HCFC free
- Can earn LEED points across four key categories of sustainable development
- Easy to use Rockwool project LEED document generator



Date: 2018/11/12
Att: Dave Latanision - SPI - Specialty Products & Insulation
RE: ROCKWOOL Inc.® Product Qualifications for LEED® Project

PROJECT & LOCATION: Example - 17601

We have received your request for information regarding ROCKWOOL® products as they relate to LEED® credits for recycled content, manufacturing location and distance from the manufacturer and raw material suppliers to the project site. Please find the following information you requested.

Credit MRc4 – Recycled Content
Your FABROCK™ LT will contain 40% pre-consumer and 0% post-consumer recycled material.

Credit MRc5 – Regional Content

Distance from Manufacturing Location to Project Site
The distance from the Milton, ON manufacturing location of your FABROCK™ LT to your project site is approximately 302.22 miles / 486.38 km.

We use basalt and binder in the manufacture of our product, but ROCKWOOL regards the location of extraction of its raw material as proprietary company information, the disclosure of which could have a negative impact on its competitiveness.

Distance from Extraction Locations to Project Site
We can however, provide information regarding whether our raw materials suppliers are within a 500 miles / 800 km radius of your project site.


85% of the resources used to make FABROCK™ LT are within 500 miles / 800 km of your project site.

Distance from Extraction Locations to Manufacturing Location:
We can however, provide information regarding whether our raw materials suppliers are within a 500 miles / 800 km radius of our point of final manufacture.


85% of the resources used to make FABROCK™ LT are within 500 miles / 800 km of the Milton, ON manufacturing location.

We trust this meets your needs. If you have any further questions, please feel free to contact our Technical Product Specialists at 1-800-265-6878 or contactus@rockwool.com

Sincerely,
Bent Jorgensen
VP Operations



Mark Bromiley
VP Business Development



8024 ESQUESING LINE
MILTON, ON, L9T 6W3

1-800-245-6878 OR (905) 878-8474

WWW.ROCKWOOL.COM Part of the ROCKWOOL Group



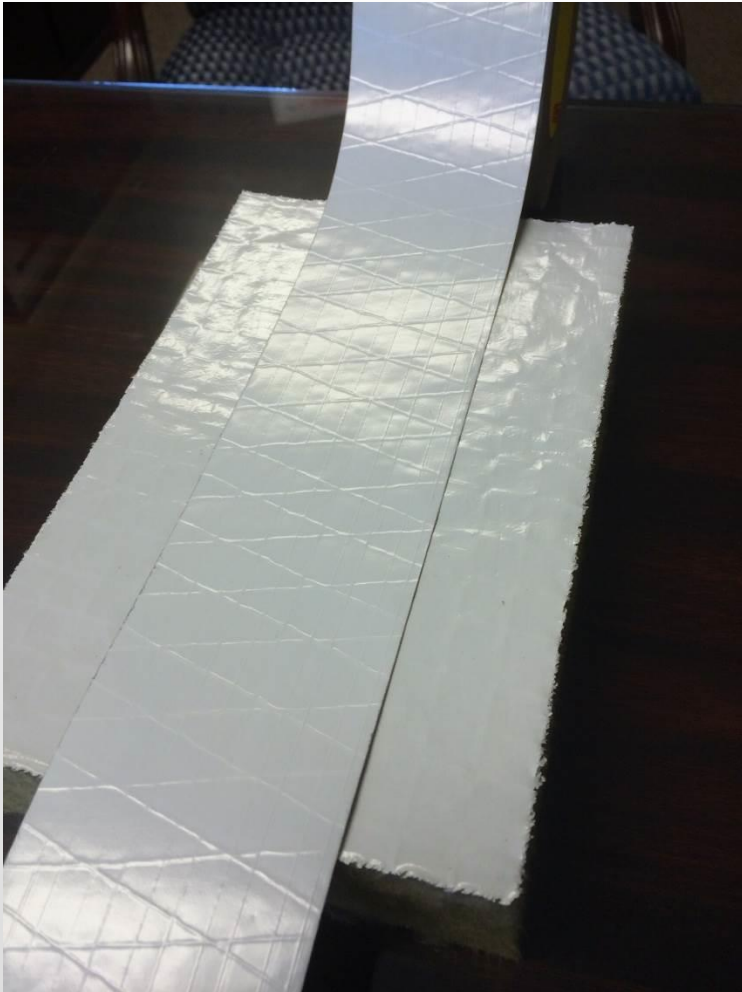
Energy Code Requirements, Impact for Owners and Occupants

- PG Board TAF - **Outstanding insulation** value offers a **solid payback** from **reduced heating and cooling costs** in adjacent occupied space
- **Additional savings** are achieved due to the material high light reflectance (85%). This can reduce the number for fixtures required to illuminate the space
- **Fewer fixtures = reduced life cycle cost** (lighting operation and maintenance).



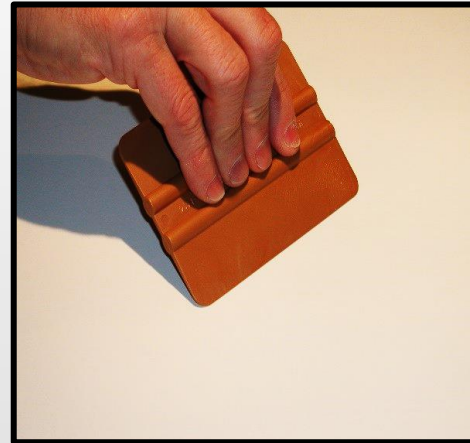
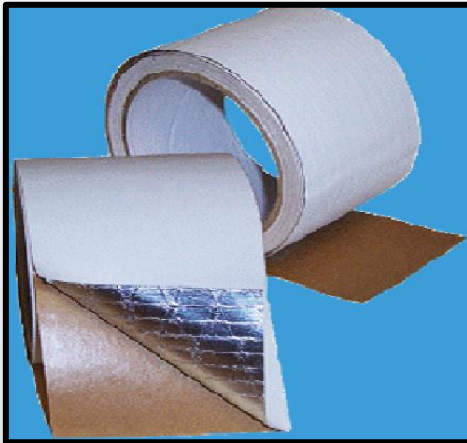
PG Board TAF - Facing with Matching System Tape

Applied Tape Matches Facing
Specify PG Joint Tape for Best Results



PG Board TAF Joint Tape

- **System matching**, high performance reinforced joint tape
 - **Follow tape application recommendations!**
 - Lightly clean panel surface with appropriate cleaner to remove dust, dirt, oil or other contaminants
 - Apply tape to all panel joints with squeegee

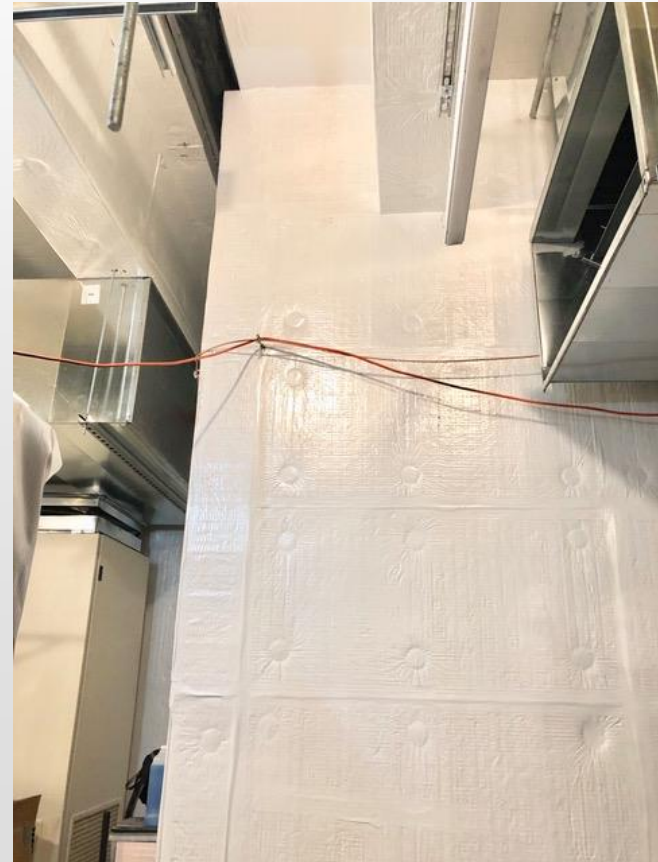


Typical Installation (Parking Garage, Utility, Mechanical, Electrical Rms...)



LaGuardia Airport Projects

- Communications Data Center
- Location Terminal B, West Parking Garage



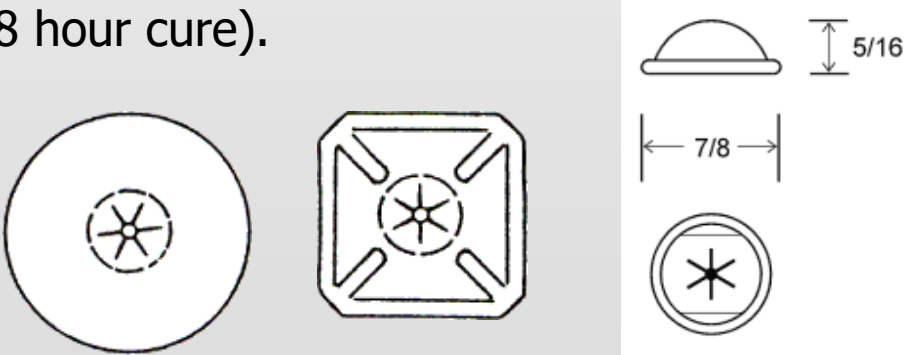
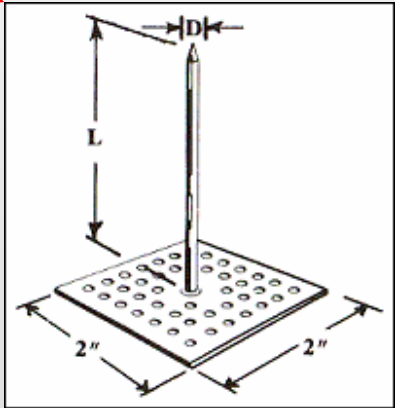
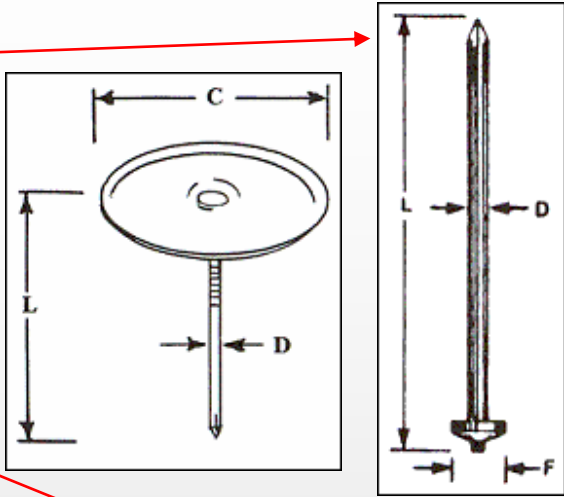
PG Board TAF (Mechanical, Electrical Rooms, etc.)

Improves room acoustics and lighting while providing a better environment in adjacent spaces



Other PG Board TAF Mounting Methods (Architect / Engineer spec'd)

- Corrugated Steel / Concrete Deck
 - CD insulation weld pin
 - 1.5" Cup head insulation weld pin
- Concrete Deck (i.e. formed, precast, docks plank)
 - Perf. base insulation pins
- Lock washers – 1.5" Round, Square,
 - Option added white dome cap
- Perforated base pin, mechanical attachment recommended
- Alternate - Use Tuff-Bond adhesive for perf. base pins (requires clean substrate and 24 – 48 hour cure).



Minimum 5 fasteners per 2' x 4' board



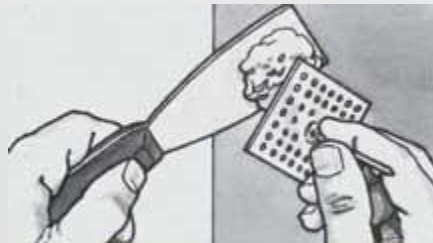
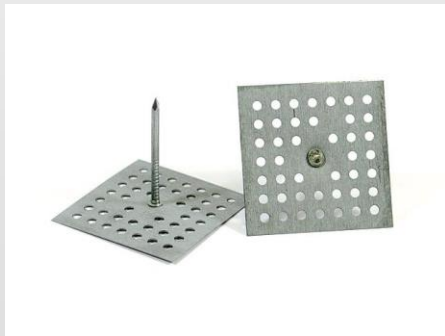
Tuff-Bond Anchor Adhesive

When using Perf. pins for panel mounting

■ **Follow adhesive manufacturer detailed installation instructions!**

▪ **Key steps**

- Clean substrate to remove dust, dirt, loose paint, oil or other contaminant that could prevent strong, long term bond.
- Apply correct amount of adhesive to perf. base
- Press and twist motion to attach
- Adhesive application temperature 45 – 90°F
- Adhesive must cure (24 - 48 Hrs.) before starting panel installation



PG Board TAF Installation Using Insulfast T-3

Insulfast - YouTube Video

<https://youtu.be/RSyQUYRn-QE>



Gun & Fastener Detail - YouTube Video

<https://youtu.be/YWHFtVpj1xA>

PG Board TAF Fastener Appearance

White Lock Washer



Cup Head Pin



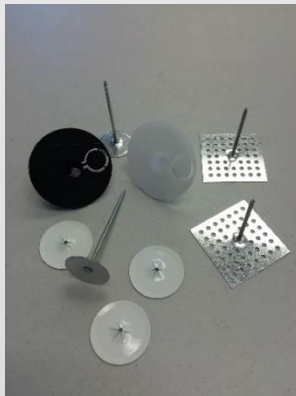
IFC Concrete Anchor



IFS Steel Anchor



Tape Covered

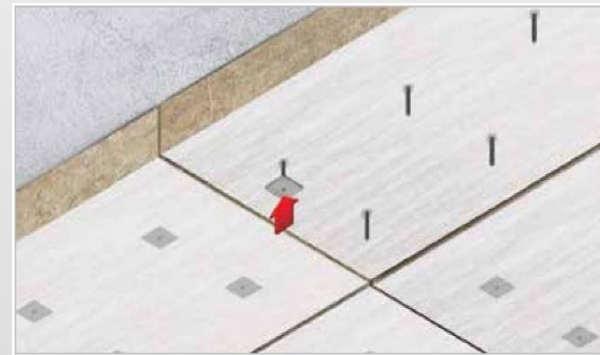
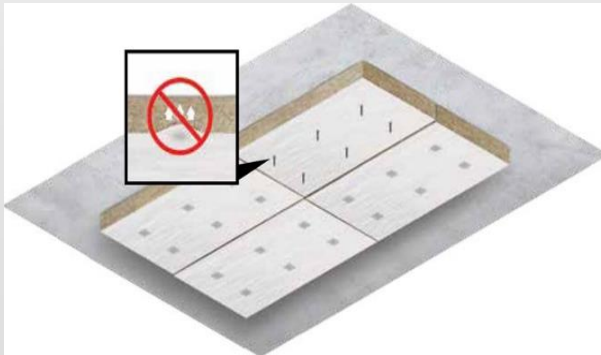


Typical Installation for Substrate Mounted Fasteners

Minimum 5 fasteners per board

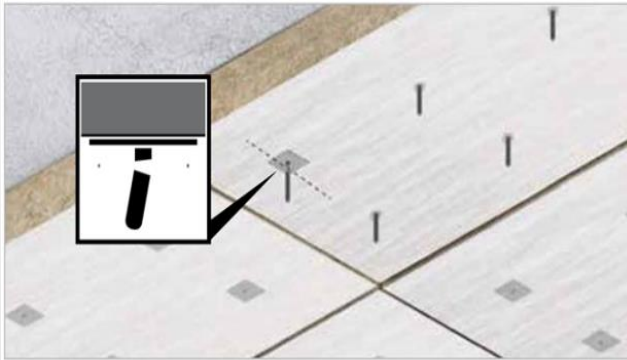
- Before starting installation, ensure substrate is clear of any contaminants.
- Measure spacing to mark correct fastener locations according to the prescribed pattern (typ. 3" in from each corner and panel center)
- Install mechanical fasteners to substrate using preferred attachment method according to fastener manufacturer's recommendations.
- Install the PG Board TAF onto mechanical fasteners. Confirm adjacent panels are aligned with each other.
- Avoid pillowing of facer material around fasteners. The insulation should not be compressed when installing insulation fasteners or lock washers.
- Secure the washer on the exposed end of the mechanical fastener.

*PG Board TAF
cuts easily with a
serrated knife.*



Typical Installation for Substrate Mounted Fasteners (cont.)

- Nip off the fastener end to prevent injury and provide a clean, finished appearance.
- Before applying tape, lightly clean the board facing to remove contaminants from the surface.
- Apply the tape per manufacturer's recommendations to joints and over washers



Note: Minimum 5 fasteners per board recommended.

Summary Key Attributes and Benefits

- Stable R Value, provides thermal insulation of up to R 30.8 (7.5") in a single layer application, (can meet R38)
- Dimensionally stable, eliminates shrinkage gaps leading to thermal breaks or shorts
- Non-Combustible core, composite panel has 20 Flame Spread, 25 Smoke Development for enhanced life safety performance
- Fire resistant up to 2150°F, can aid in reducing structure damage from fire exposure
- Composite panel is Certified Class A, produced with Intertek Lab follow up service ensuring consistent quality
- Water repellent, insulation properties are restored after drying
- The proprietary PSF "paper free" facing offers no food for mold growth, especially important in high humidity environments
- The 85% light reflectance reduces lighting requirements, associated energy and maintenance costs
- Provides sound damping, with optional perforated facing provides an NRC of 0.70 to quiet applied areas and adjacent space
- Facing options with permeance ratings of 0.02 for standard and >10 perms with the optional micro perf facing to suit project conditions
- The only product available with an optional perforated facing for acoustics and vapor permeance
- Available at 1.5, 2, 2.5, 3, 3.5, 4, 5, 6, and 7.5" thick to meet CODE, R Value design requirements
- The panel finish can be cleaned with warm soapy water (see cleaning and maintenance instructions)
- The matching system tape is also paper free and provides a clean, uniform appearance
- The insulation core is produced with natural and recycled material
- Insulation is EPD Certified per Underwriters Laboratory
- Can provide LEED Credits in up to 4 categories
- A variety of fastening methods are available to suit virtually any substrate and application condition

Complete and Return the Quote Request – Order Form



PG Board TAF™ Quote Request - Order Form

PG Board TAF - The Class A rated, fire resistant insulation system is designed for parking garage, mechanical, electrical rooms, etc. The stable R Value panels provide excellent long term energy savings while the bright white, paper free finish, provides superior mold and mildew resistance for unconditioned space applications. The 85% light reflectance finish brightens spaces and can reduce light fixture requirements and related energy costs. The optional perforated facer provides enhanced sound absorption with an NRC value of 0.70 at 4" thickness per ASTM C423 and ASTM E795 Type A mounting.

COMPANY	CONTACT	DATE
PROJECT NAME & LOCATION		PHONE
		DATE REQUIRED
SHIP TO LOCATION		P.O. NUMBER

STANDARD 2' x 4' PG BOARD TAF™			NON-STANDARD BOARD SIZE			(Check Box)			
PG BOARD TAF Thickness (")	R Value	2' x 4' SF Req'd.	L"	W"	Quantity Pcs.	White Face	Perf. White Face	Alt. Silver Face	Perf. Silver Face
1.5	6.2								
2	8.2								
2.5	10.3								
3	12.3								
3.5	14.4								
4	16.4								
5	20.5								
6	24.6								
7	28.7								
8	32.8								

Project substrate determines available PG Board TAF Fastener options.

Notes:

- * Fastener count to be estimated at a minimum 5 per board
- * Fasteners selection per Specifier to suit substrate, project conditions, etc.
- * PG Board TAF is quoted with system matching seam tape



SP1 - Specialty Products & Insulation
 C/O Dunes Point Capital
 411 Theodore Fremd Ave., Rye, NY 10580
 Ph. (855) 519 - 4044,
 E-mail: fsbteam@fbmsales.com Web: www.fbms-sp1.com
 November 2018 - Form PG Board TAF

Disclaimer and Limitation of Warranty: The purchaser/user is advised to consult with the appropriate professionals and to read the manufacturer's product information to determine the adequacy or appropriateness of the product for the use intended. SP1 makes no claim or representation regarding the use or applicability of the products. Further, SP1 makes no warranty, expressed or implied, and declares all warranties including warranties of merchantability and fitness for a particular purpose.

For additional information please visit
www.sp1-co.com
Ask your Sales Representative about our
other products and services.





Products & Services

- [C & I Insulation](#)
- [GSD](#)
- [Fabricated](#)
- [OEM](#)
- [Marine](#)
- [Fire Protection](#)
- [Acoustical](#)
- [Specialty](#)
- [Manufacturing Partners](#)
- [Product Data Sheets](#)

PG Board TAF Insulation

PG Board TAF insulation is designed for parking garage and mechanical room ceiling/deck applications to satisfy building code insulation requirements where the space above is conditioned (i.e. Apartment and Office Buildings, Medical Facilities, Universities, etc.).

PG Board TAF is a lightweight, semi rigid, non-combustible, high temperature insulation finished with a bright white reinforced facing. Per Code the as supplied material must have a Class A fire exposure rating. PG Board TAF has outstanding Flame Spread / Smoke Development ratings of 20/25. The product is produced under lab follow-up service and product shipments carry the laboratory mark ensuring specifiers, installers and owners of consistent quality and performance.

Now, think about the typical dark, noisy parking garage. PG Board TAF finish provides 85% light reflectance to brighten the space while the panel's excellent sound absorption properties quiet immediate and adjacent space. PG Board TAF also resists temperatures of up to 2,150°F. In the event of a vehicle fire this can provide a safer environment for facility occupants and emergency responders.

PG Board TAF - Reduces heating, cooling and lighting costs and make spaces more comfortable

More Information on PG Board TAF Insulation

- [PG Board Product Information](#)
- [PG Board Data Sheet](#)
- [PG Board \(Perf.\) Data Sheet](#)
- [PG Board TAF Fact Sheet](#)
- [PG Board Order Form](#)
- [PG Board Product Specifications](#)
- [PG Board Installation Guide](#)
- [PG Board Installation Video](#)
- [PG Board Fastening System Video](#)
- [PG Board Cleaning and Maintenance](#)



Register for an educational webinar at spi-co.com, PG Board TAF

Product specifications in MasterSpec and BSD SpecLink

Find us in

MasterSpec[®]

a product of The American Institute of Architects



Questions
Contact: Fabteam@spi-co.com
Or call (855) 519-4044

