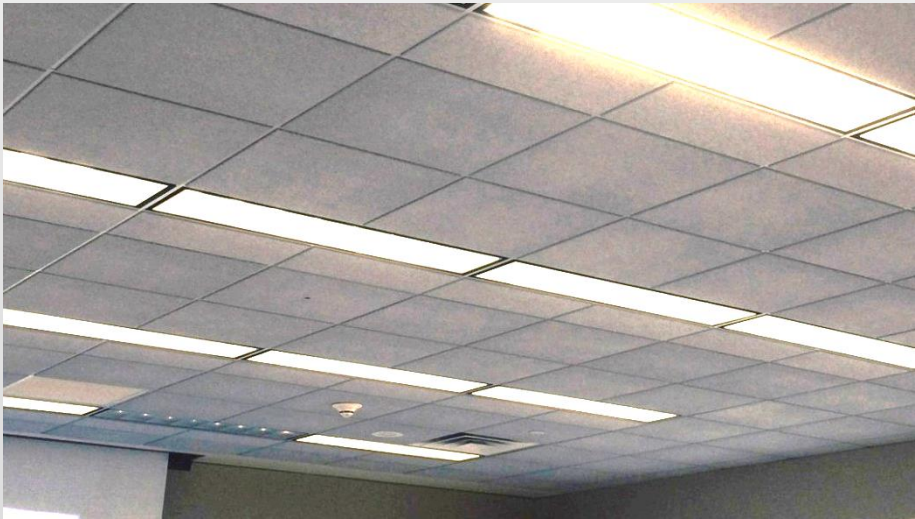
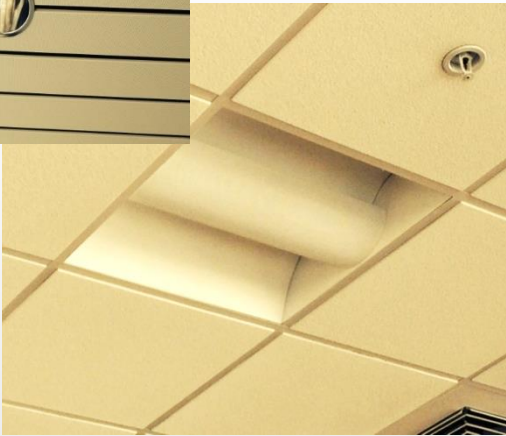


# SafeLite® Patented Ceiling Fixture Covers

Documented Fire Protection,  
Sound Blocking and Thermal  
Insulation

# Ceiling Fixtures (Lights, Speakers, etc.) Come In Varied Shapes and Sizes



Protection for Can lights, 2' x 2', 2' x 4' 1' x 4', end to end, etc. up to 14" tall



# Applications For Both Suspended & Drywall Ceilings

(Ceiling penetrations typically make up 10 - 20% of the ceiling area)



Deep egg crate  
style fixture

Recessed can lights, troffers, speakers, etc. impact Floor/Ceiling and Roof/Ceiling assembly fire ratings, sound transmission and energy losses.

# UL / ULC Listings Require Fixture Protection

---



**Underwriters  
Laboratories**

- Every UL listing of fire rated, suspended and drywall Floor / Ceiling and Roof / Ceiling assemblies require recessed fixture protection
- Items such as recessed light fixtures & speakers must be protected with specified materials

# International Building Code (IBC)

**713.4.1.2 Membrane penetrations.** Penetrations of membranes that are part of a *horizontal assembly* shall comply with Section 713.4.1.1.1 or 713.4.1.1.2. Where floor/ceiling assemblies are required to have a *fire-resistance rating*, recessed fixtures shall be installed such that the required fire resistance will not be reduced.

*Ignorance to CODE  
does not excuse liability*



## Historical Approaches – Field Constructed Tile & Sheetrock Enclosures

As reported by inspectors and contractors, tile or drywall enclosures don't hold up. Nails offer little holding power in the edge of ceiling tile or drywall

← Cover notched to accept power cable

Considerable material and labor expense is required to cut, construct and install these fragile, non-certified covers

**IMPORTANT:** Installers, Architects and Owners can face liability exposure for assembly failures.

# Drywall Enclosure Concerns

Common practice, 2 layers 5/8" rated drywall fastened to steel framing  
Joints typically taped & spackled and penetrations firestopped

Non-Certified  
Fixture Cover



Wood framing

- \* **CAUTION:** Drywall limitations state “avoid exposure to sustained temperatures of 125°F Not a good choice for heat producing applications. Heat dries out chemically bound water needed for material fire resistance
- Typical florescent light fixture ballasts operate at 68-70°C (155-160°F) with a typ. maximum of 135°C (275°F).
  - Fixture bulbs often generate considerable heat especially in unconditioned ceiling cavity spaces
  - **As shown**, field constructed drywall enclosures are subject to variations in construction quality and therefore fire performance
  - Power cable and suspension wire notches present clear paths for fire if not properly sealed
  - Covers are heavy and labor intensive to construct and install

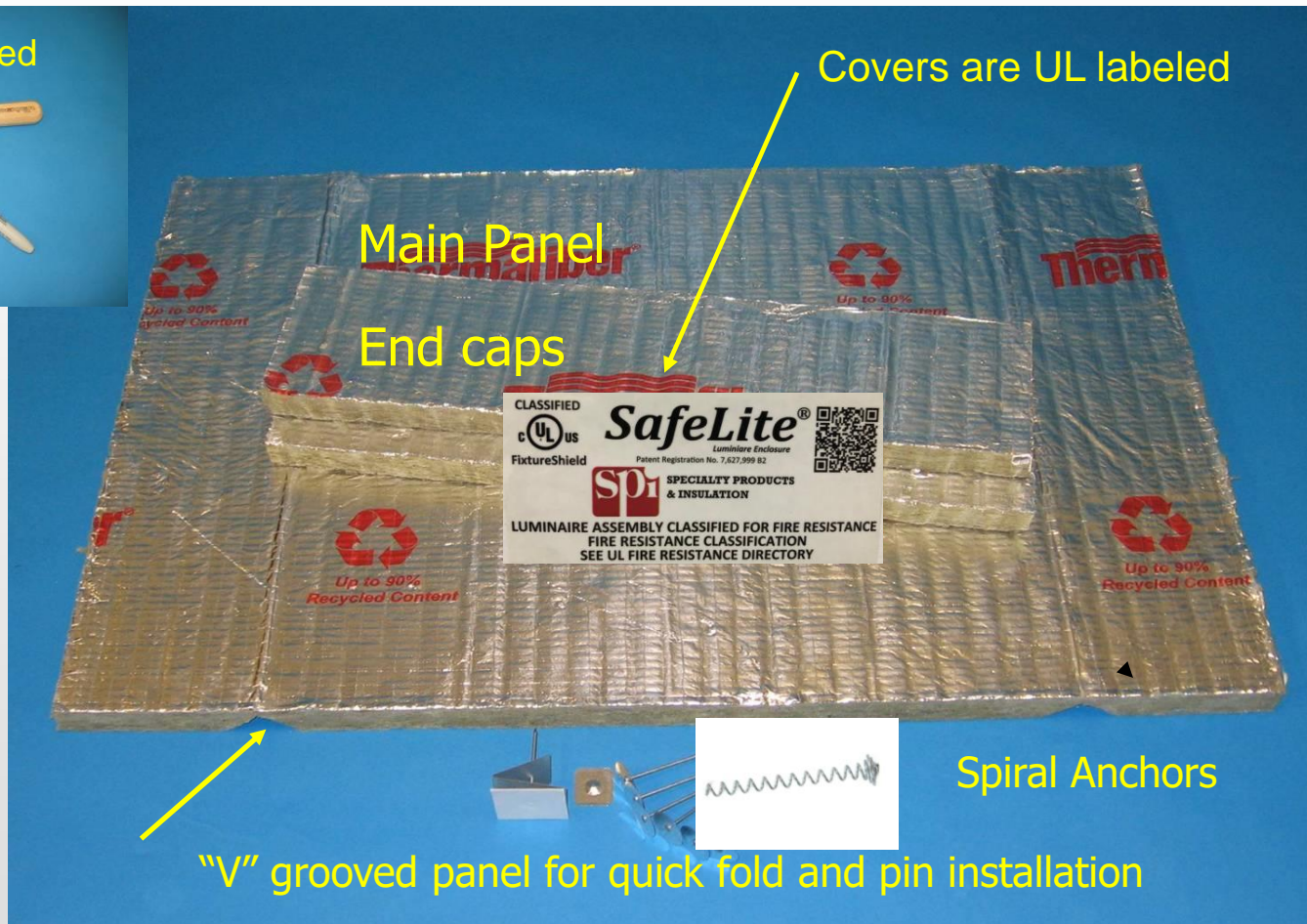
# Constructing Steel Framed Drywall Fixture Enclosure



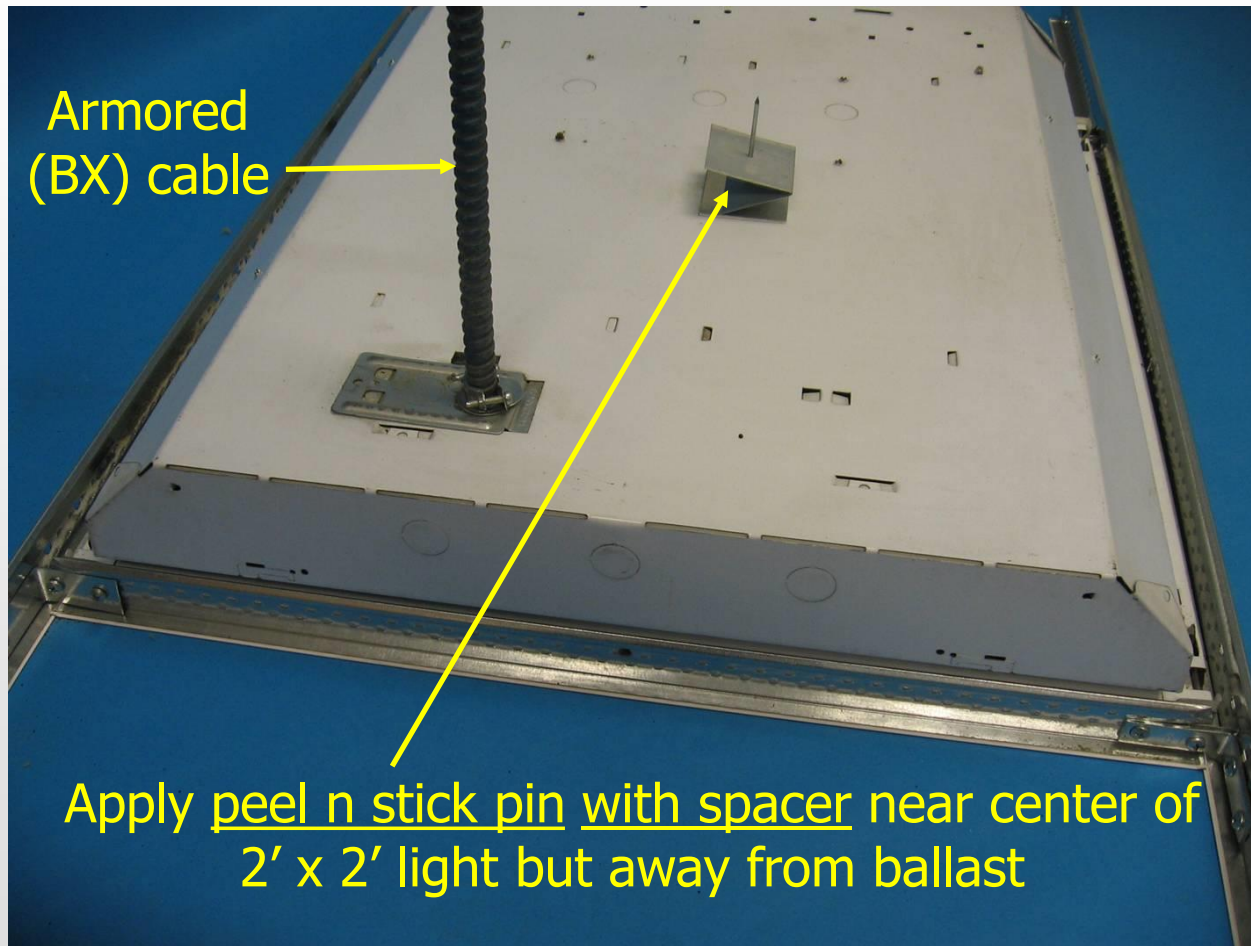
Skilled labor typically constructs 1 steel framed, non-certified drywall enclosure per hour  
SafeLite covers install at a rate of 10 -12 per hour, for substantial labor savings!

# Installing SafeLite is Quick n Easy (typically 5-6 mins.)

## Tools Needed



## Installation On A Standard 2' x 2' Light Fixture, Step 1



## Main Panel Installation, Step 2



## Slit & Pull Cable into SafeLite, Align cover with Fixture, Step 3



Other molded troffer covers with limited fire ratings, require disconnecting the power cable to pass through a precut cover opening, a more costly installation.





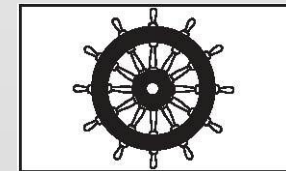
# Patented SafeLite®

The only UL Certified fixture enclosure with **up to 3 hour ratings**

SafeLite listings include: Can lights, 2' x 2', 2' x 4', 20" x 60" light troffers  
including vented fixtures and speakers

SPI fabricates **covers to fit virtually any size fixture**

Patent / U.S. Patent Registration No. 7,627,999 B2



1408/12



# Typical SafeLite Users

- Acoustical and Drywall contractors
- Electrical contractors
- General contractors
- Institutional facility maintenance depts. especially at Hospitals, Retirement Homes, Universities, Schools and Worship centers
- A/V specialty contractors
- Firestop contractors
- Modular construction factories



# Substantial Contractor Savings!

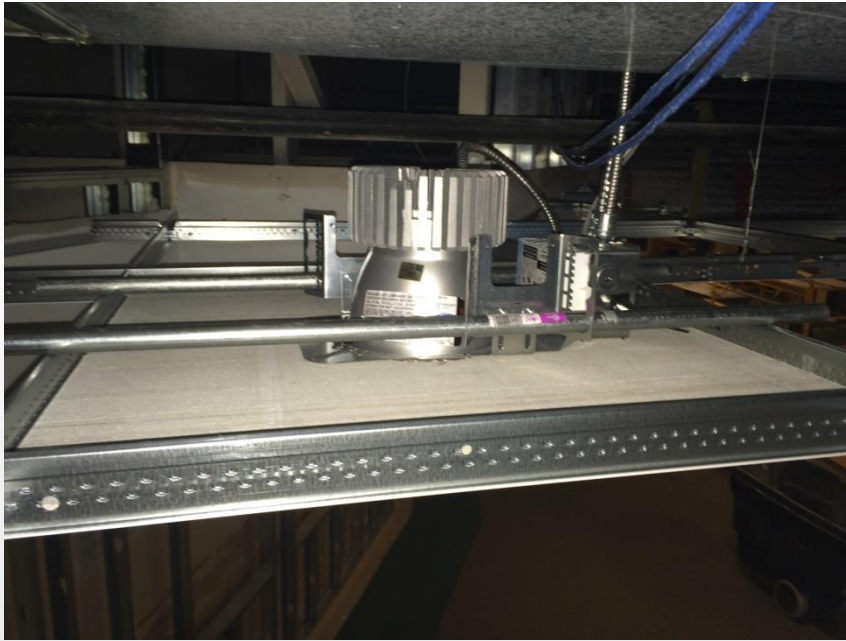


- Installers report completing 1 drywall enclosure per man hour (cut parts, fit & assemble)
- SafeLite enclosures typically install at 10-12 per man hour
- One contractor documented \$10,000 savings on his first SafeLite project versus “field fabricating” drywall enclosures
- **Labor Example** - Using \$100/hr (loaded rate) for a project with 200 light covers.  
At 1 drywall cover/hr =  $200 \times \$100 = \mathbf{\$20,000}$  labor cost (**\$100 per cover**)  
At 10 SafeLite covers/hr = **\$2,000** labor cost (**\$10 per cover**)  
**Labor savings \$18,000 on 200 covers = \$90 labor saved per cover**

Major contractor benefits from using SafeLite  
Labor savings, reduced call backs and liability exposure for non-compliance

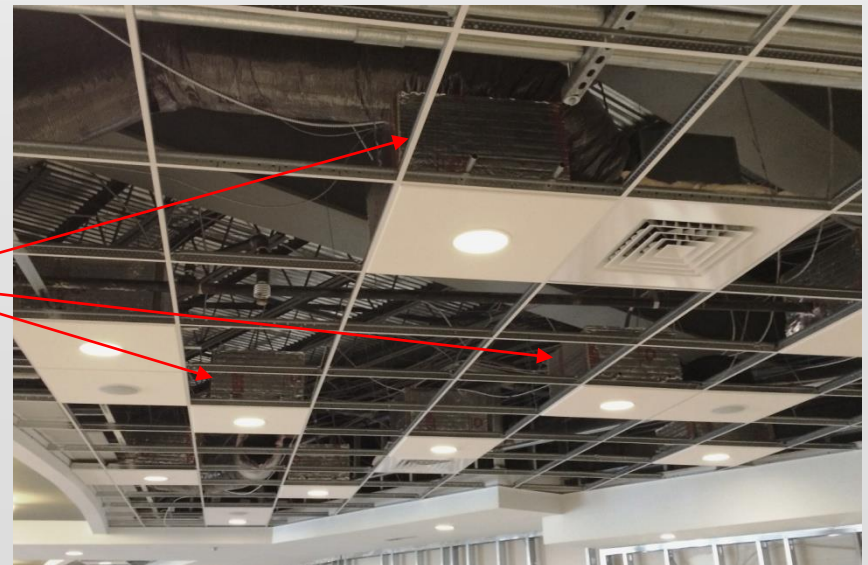


# Typical SafeLite Can Light Application



This fixture required minimum 3" clearance all around. SafeLite was fabricated to comply

SafeLite installed in a suspended ceiling system for Fire Protection and Sound Blocking



# SafeLite Quality Control / UL Follow-up Service



**Safety Fixture Shield Checklist**

DATE: \_\_\_\_\_ ORDER # \_\_\_\_\_

LENGTH: 48 WIDTH: 21 1/2 CAP WIDTH: 48 QTY: 40

COVER (WITH AIR BRACE) HEIGHT: 3 1/2 CAP HEIGHT: \_\_\_\_\_

|                        | BOARD THICKNESS | OVERALL BOARD WIDTH | OVERALL BOARD LENGTH | BOARD THICKNESS AT BASE OF V GROOVE |
|------------------------|-----------------|---------------------|----------------------|-------------------------------------|
| FIRST ACCEPTABLE PIECE | 1.273           | 35 1/2              | 48                   | .122                                |
| REPOINT TEST PIECE     | 1.268           | 35 1/2              | 48                   | .127                                |
| FINAL TEST PIECE       | 1.264           | 35 3/8              | 49                   | .126                                |

BOARD THICKNESS AT BASE OF V GROOVE: 1/8" - 1/4"  
V GROOVE WIDTH: 1/4" - 3/4"  
ALL OTHER TOLERANCES: ±0.015"

NOTES:

**12A. Fixture Protection - Luminaires, Luminaire Assemblies and Luminaire Enclosures Classified for Fire Resistance\*** — (Not Shown) - As an alternate to Item 12, luminaire enclosure kits consisting of pre-cut pieces of faced batts and assembly hardware may be used to form a five-sided rectangular enclosure over NEMA G recessed light fixtures. Luminaire enclosure kit to be installed in accordance with the accompanying installation instructions. When air supply light fixtures with air boots are used, fixtures and air boots shall be fully enclosed except for the opening needed to accommodate connection to air supply duct.

**SPI LLC, dba SPI – Specialty Products & Insulation - SafeLite®**



# UL Online Directory, SafeLite Certifications

## Luminaires, Luminaire Assemblies and Luminaire Enclosures Certified for Fire Resistance

[See General Information for Luminaires, Luminaire Assemblies and Luminaire Enclosures Certified for Fire Resistance](#)

### **SPI LLC**

R27475

SPI-SPECIALTY PRODUCTS & INSULATION

C/O DUNES POINT CAPITAL

411 THEODORE FREND AVE, SUITE 125

RYE, NY 10580 USA

**SafeLite® Enclosure Kits** for use with recessed luminaires in Design Nos. [D010](#), [D216](#), [D219](#), [G230](#), [G234](#), [G258](#), [G523](#), [G526](#), [J202](#), [L006](#), [P207](#), [P228](#), [P230](#), [P237](#) and [P267](#).

Last Updated on 2019-02-21

The appearance of a company's name or product in this database does not in itself assure that products so identified have been manufactured under UL's Follow-Up Service. Only those products bearing the UL Mark should be considered to be Certified and covered under UL's Follow-Up Service. Always look for the Mark on the product.

UL permits the reproduction of the material contained in the Online Certification Directory subject to the following conditions: 1. The Guide Information, Assemblies, Constructions, Designs, Systems, and/or Certifications (files) must be presented in their entirety and in a non-misleading manner, without any manipulation of the data (or drawings). 2. The statement "Reprinted from the Online Certifications Directory with permission from UL" must appear adjacent to the extracted material. In addition, the reprinted material must include a copyright notice in the following format: "© 2019 UL LLC"

SafeLite UL Design Listings include:  
Armstrong, USG, Saint-Gobain, Rockfon and Gypsum Assemblies  
Note: Additional UL Design Listings Available for Reference



# ULC Online Directory, SafeLite Certifications

## Luminaires, Luminaire Assemblies and Luminaire Enclosures Certified for Fire Resistance Certified for Canada

[See General Information for Luminaires, Luminaire Assemblies and Luminaire Enclosures Certified for Fire Resistance Certified for Canada](#)

### **SPI LLC**

R27475

SPI-SPECIALTY PRODUCTS & INSULATION  
C/O DUNES POINT CAPITAL  
411 THEODORE FREND AVE, SUITE 125  
RYE, NY 10580 USA

**SafeLite® Enclosure Kits** for use with recessed luminaires in Design Nos. [D010](#), [D216](#), [D219](#), [G230](#), [G234](#), [G258](#), [G523](#), [G526](#), [J202](#), [L006](#), [P207](#), [P228](#), [P230](#), [P237](#) and [P267](#).

[Last Updated](#) on 2019-02-21

The appearance of a company's name or product in this database does not in itself assure that products so identified have been manufactured under UL's Follow-Up Service. Only those products bearing the UL Mark should be considered to be Certified and covered under UL's Follow-Up Service. Always look for the Mark on the product.

UL permits the reproduction of the material contained in the Online Certification Directory subject to the following conditions: 1. The Guide Information, Assemblies, Constructions, Designs, Systems, and/or Certifications (files) must be presented in their entirety and in a non-misleading manner, without any manipulation of the data (or drawings). 2. The statement "Reprinted from the Online Certifications Directory with permission from UL" must appear adjacent to the extracted material. In addition, the reprinted material must include a copyright notice in the following format: "© 2019 UL LLC"

**SafeLite ULC (Canada) Listings**  
**Note: Additional Listings Available for Reference**



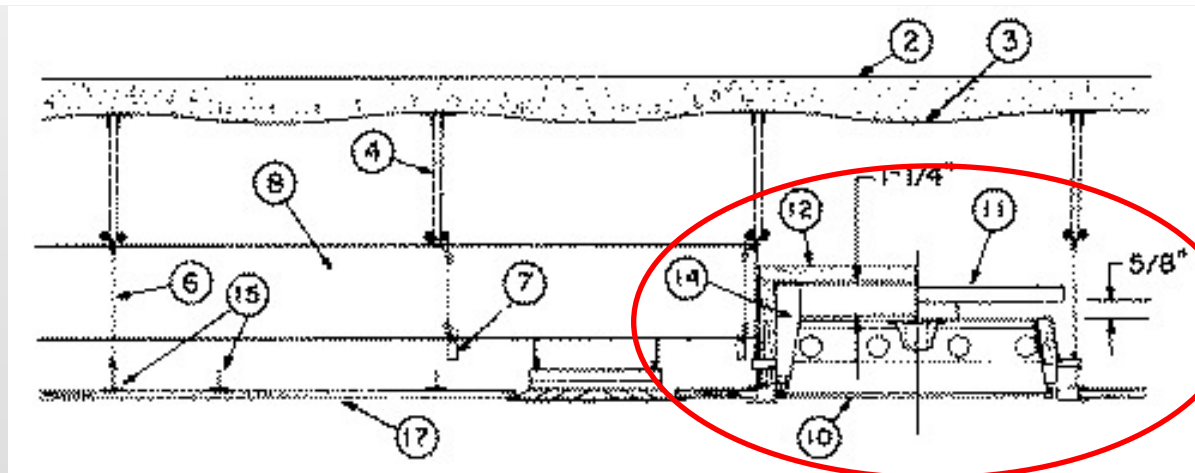
# Drywall Ceiling Applications

- 1, 2 & 3 hour fire rated drywall (Type X) systems include: Floor/Ceiling or Roof/Ceiling assembly materials.
  - Note: Fire rated drywall ceilings are more common than rated tile & grid systems
- Non fire rated drywall mounted to steel or wood framing (***sound blocking and energy savings may be the primary concern***)
- Unprotected fixtures are pathways for fire, sound transmission and energy losses

## Design No. G523

July 28, 2017

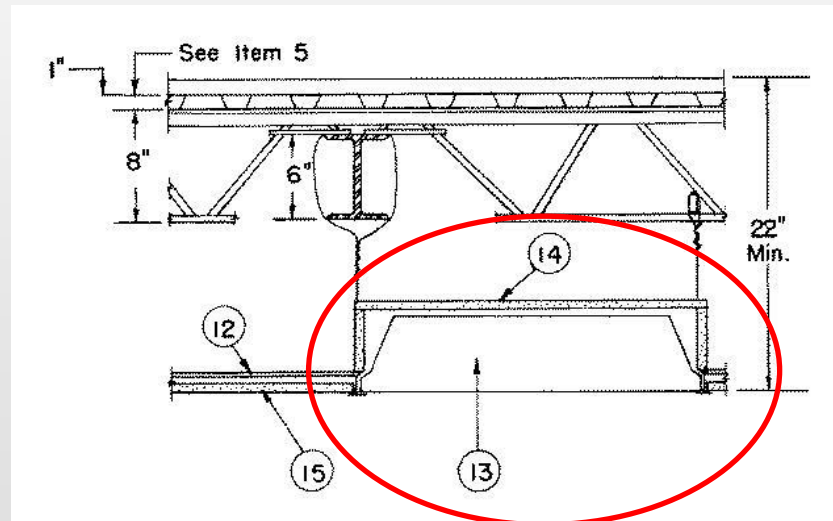
Restrained Assembly Rating — 2 and 3 Hr.



Item 12: SafeLite

# Grid & Tile Ceiling Systems (Armstrong, USG, Saint-Gobain, Rockfon)

- 1, 2 & 3 hour fire rated tile and grid systems include: Floor/Ceiling or Roof/Ceiling assembly materials
- Non fire rated tile and grid (selected on esthetics, NRC and CAC performance)
- CAC (ceiling attenuation class) ceiling sound blocking performance
- Recessed ceiling fixtures (lights and speakers impact ceiling CAC performance)



**Item 14.** Fixture Protection – UL P267

Luminaires, Luminaire Assemblies and Luminaire Enclosures Classified for Fire Resistance\*

SPI LLC - **SafeLite**®

dba SPI - Specialty Products & Insulation



# Fixture Lamp Types

- Specific fixture lamps or bulb types may not be reported in Certified UL assembly details
- UL details report fixture: housing material, type, size, vented, etc.
- Light fixture manufacturers identify if a specific fixture is IC or Non-IC rated. The application classification lists appropriate fixture lamp types and wattage
- SafeLite fixture covers are regularly installed and approved by the AHJ for: Incandescent, Fluorescent, HID and LED lamped fixtures
- Based on the above, SafeLite can be considered for a variety of lamped fixture types



# SafeLite Physical Properties

---

- Maximum service temperature: 1200F
- Melt Point: > 2000F
- Fire Performance:
  - Non-combustible per ASTM E-136
  - Flame Spread 25, Smoke 0 per ASTM E-84
  - **Meets IBC Code requirements for Plenum Applications**
- R Value 4.2 per inch per ASTM C-518
  - Effective **R Value 5.25 at 1 1/4" thick**  
(Steel housings readily transfers heating or cooling energy)
- **SafeLite reduces heating & cooling energy costs**
- Acoustical Performance per ASTM C-423, NRC 1.00 at 2" thick

Sound blocking "CAC" information follows

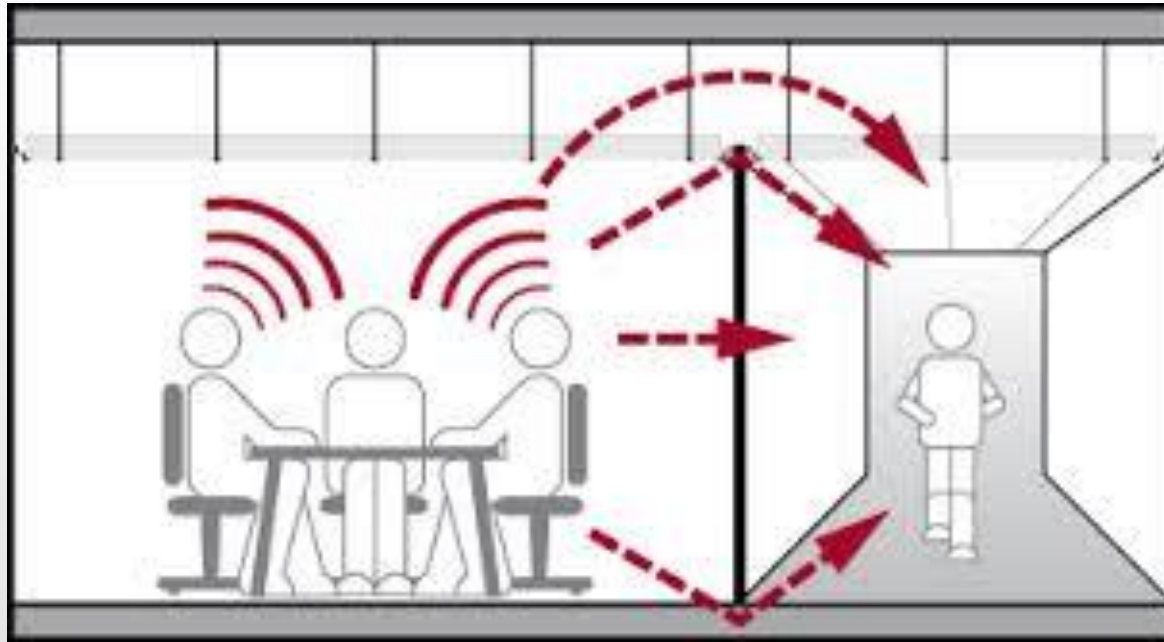


# Sound Paths Through Ceiling Fixtures



# Ceiling Attenuation Class (CAC) Ceiling System Rating

- CAC is an important ceiling material rating as it controls sound transmission and speech privacy between closed adjacent spaces.



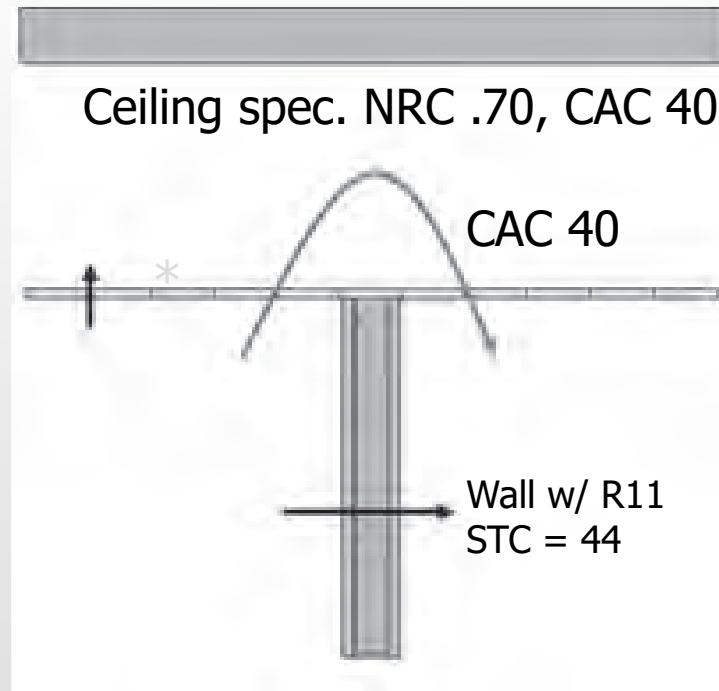
UL Certified SafeLite provides documented sound blocking performance

# Ceiling CAC Performance

A measure for rating the performance of a ceiling system as a **barrier to airborne sound transmission** through a common plenum between adjacent closed spaces such as offices or classrooms.

**A CAC less than 25 is considered low performance**

Drywall or  
Suspended Ceiling



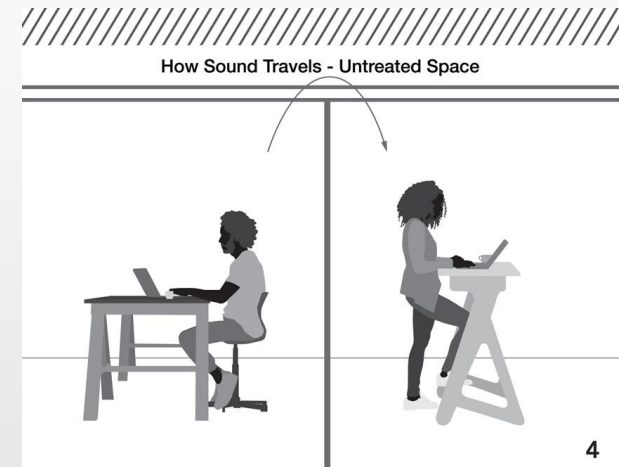
*Penetrations through the ceiling membrane increase noise transmission to adjacent and above spaces*

**SafeLite has documented sound blocking performance**  
Especially important in health care and education environments  
for speech privacy, speech intelligibility and concentration.



# CAC – Two Room Transmission Loss – AL20 (TM418) ASTM E 1414

- Armstrong high CAC #1811 Fine Fiss. tile **without light fixtures**, CAC 44
- Armstrong #1811 ceiling system w/ 2, 2' x 4' light fixtures, CAC 41
- Armstrong #1811 tile ceiling w/ 2 – 2' x 4' fixtures & **SafeLite** covers CAC 45 (4 db improvement is substantial)



Two unprotected light fixtures significantly increased ceiling membrane sound transmission  
More fixtures = greater sound transmission

SafeLite restored ceiling performance to as if recessed fixtures weren't installed

*This documented performance is critical for noise control and sound proofing*



**HIPAA**  
Compliance

- Under Section 164.502 of the Federal Register's Department of Health and Human Services final ruling on Standards for Privacy of Individually Identifiable Health Information it states that:
- "Protected Health Information includes individually identifiable information in any form, **including information that is transmitted ORALLY**, or in written or electronic form.
- This Privacy Ruling requires that covered health care entities make reasonable efforts to limit the use or disclosure of protected health information to the minimum necessary."

# HIPAA Regulations Impact

- Hospitals
- Physician Offices
- Medical Clinics
- Pharmacies
- Public Health Authorities
- Military Medical Bases
- Life Insurers
- Billing Agencies
- Information System Vendors
- Service Organizations
- Employers
- Schools



Speech Confidentiality

# Common SafeLite Applications (Fire & Sound Blocking and Energy Savings)

- Hospitals, Medical Facilities, Retirement Homes
- Classrooms, Music rooms
- Office, Restaurants, Mixed Function Space
- Performance Space, Religious & Gov't Facilities



Hebron Platform - 1600 SafeLite installed on lights and speakers



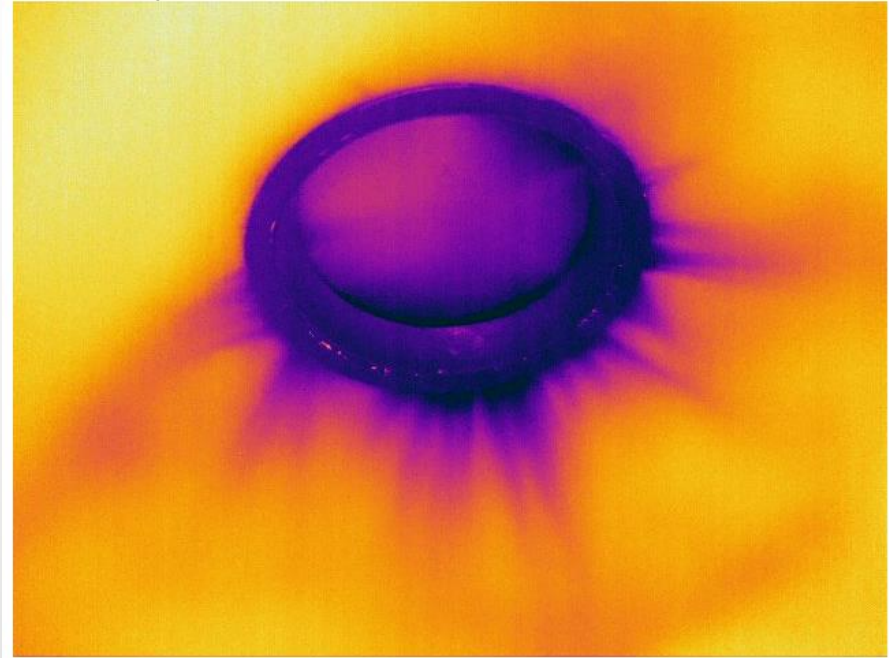
# Thermal Image Scan

Uninsulated recessed fixtures represent significant energy loss areas

Missing Ceiling Insulation



Can light air leaks from ceiling cavity to conditioned space



1994 Penn State Engineering Study - 1 can light  
\$5-30 energy loss/yr. w/ 2-10 CFM leakage

**Fixture sheetmetal housings provides no insulation**

SafeLite light covers @ 1 1/4" tk. provide an R Value of 5.25 reducing  
fixture energy losses during heating and cooling seasons





**PennState**

### *A commonly referenced light fixture study*

- 1 conventional recessed can light fixture loses between **\$5 – \$30 per year** worth of energy (1994 energy cost)
- Can light air leakage of 2-10 cubic feet per minute (CFM) per fixture
- This dumps ~ 1/3 gallon of condensed moisture daily into unconditioned ceiling or attic space (results in mold growth, ice dams, sheathing and framing damage)

### **Adjusted for the current cost of electricity (1994-2020)**

- According to the U.S. Bureau of Labor Statistics, prices for electricity were 67.94% higher in 2020 versus 1994
- A 2' x 4' fixture represents 60 times the surface area opening of a 6" can light

# 2009 IECC Mandatory Requirements – Recessed Lighting

(502.4.8) International Energy Conservation Code

## **All recessed luminaries installed in the building envelope**

- Type IC rated and sealed with gasket or caulk between housing and interior wall or ceiling covering
- Type IC rated and labeled in accordance with ASTM E 283 to allow  $\leq 2.0$  cfm of air movement from conditioned space to ceiling cavity
- **CODE = Minimum Requirement**
- SafeLite provides enhanced energy savings, reduces green house gas emissions and can qualify for LEED Credits

Note: State Code / Project Spec may allow Non-IC fixtures

Alternate Ref. ASHRAE 90.1



Hot and cold air readily passes through the steel housing and fixture holes



Per CODE, “Air-Tite”  
but NO Insulation Value



SafeLite Enhanced Fixture Insulation

Renovation and new projects can include Non-IC fixtures



# SafeLite Environmental Benefits

- Sustainable, made from natural materials with a minimum of 70% post- industrial recycled content (and available with up to 90%)
- An effective R value of 5.25 reduces energy losses, greenhouse gas and carbon emissions for cost savings
- Can contribute to LEED credits



# Summary SafeLite Advantages

- Maintains or restores assembly life safety fire ratings
- Complies with CODE and UL/ULC designs
- Produced to fit small LED thin lights to large fixtures up to 60" long equals all project requirements from one source
- ¾, 1, 2 & 3 hour ratings for grid, tile and drywall assemblies
- No need to disconnect power cables or shut off power to install on existing fixtures, reduces installation cost and business interruptions
- UL Certified design coverage includes vented fixtures
- Documented sound blocking (CAC): quiets space, speech privacy per HIPAA, creates a better learning environment
- Reduces heating and cooling seasonal energy losses for life cycle cost savings, reduced greenhouse gas and carbon emissions
- Quick and easy installation (5-6 mins.) on new or existing project applications
- Made in the USA





## SPECIALTY PRODUCTS & INSULATION



### **SafeLite**<sup>®</sup> Patent / U.S. Patent Registration No. 7,627,999 B2 (Fire, sound blocking and energy savings performance)

**Fire** - Maintains fire rated ceiling assembly integrity, as shown in UL suspended and drywall ceilings listings. Penetrations such as recessed light fixtures and speakers must be protected. As shown in UL Listings, SafeLite offers proven fire protection with up to 3 hour fire ratings for a variety of construction assemblies.

**Sound Blocking** - UL Listed SafeLite enclosures offer documented acoustical performance greatly improving speech privacy and reducing unwanted sound transmission. This performance is critical for sound proofing efforts. Applications include: education, apartments, condominiums, retail etc.

**Energy Savings** - SafeLite has an effective R value of 5.25 at 75° F that conserves energy during heating and cooling seasons thereby reducing green house gas and carbon emissions.

**Marine** - SafeLite has US Coast Guard approval for thermal and acoustical application under certifications 164.109/11, 164.112/144 and 145.

SafeLite is available to accommodate a variety of florescent light fixture sizes: 24" x 24", 12" x 48", 24" x 48", 20" x 60" as well as recessed can or high hat style fixtures to satisfy ceiling assembly designs specified in UL listings and required by Building Code.

SafeLite is fabricated from high temperature, noncombustible, rigid mineral fiber board (Covers are supplied at 1-1/4" thick foil faced on one side for enhanced durability. Panels are custom cut and grooved to effortlessly fold into a standard box enclosure to accommodate specific light fixture dimensions and maintain a fixture air space (custom cut enclosures are also available). Florescent light covers are supplied with insulation pins and locking washer to maintain clearance and secure the cover to the fixture. Pre cut end caps are provided with new improved securing pins.



#### Additional **SafeLite** Benefits Include:

- The lightweight (~7 pounds for a 2' x 2' light fixture) construction is a quick and easy to install saving considerable labor time and expense.
- The use of fixture securing and enclosure fasteners provides a durable system that stays in place.
- The rigid board enclosure and new fasteners offer improved durability compared to traditional field constructed enclosures.
- Covers slit easily to accommodate light fixture power cable and fixture or ceiling suspension wires, reducing labor costs for installation.
- Standoff insulation pins maintain air space requirements.
- SafeLite insulation board is made from natural materials having a recycled content of up to 90% and contributes to LEED credits.



1408/12



Intertek



# SafeLite Packaging Label



# SafeLite®

Patent / U.S. Patent Registration No. 7,627,999 B2

Quantity

|  |
|--|
|  |
|  |

Description

2 x 4 Standard fluorescent cover

2 x 2 Standard fluorescent cover



Custom Covers:

Fluorescent, Can Lights, Speakers, etc. (inside cover dimensions)

Length

Width

Height



1408/12

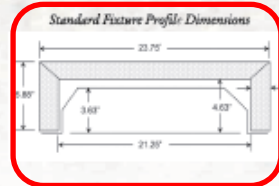


Fixture Enclosures for Ceiling Assembly Fire, Acoustic and Thermal Performance  
Phone: (717) 581-0650 • Fax: (717) 581-0655 • [www.spi-co.com](http://www.spi-co.com)

LUMINAIRE ASSEMBLY CLASSIFIED FOR FIRE RESISTANCE  
CLASSIFICATION SEE UL PRODUCTS  
CERTIFIED FOR CANADA DIRECTORY AND  
UL FIRE RESISTANCE DIRECTORY - (P)

# Quote/Order Form

|                         |         |               |
|-------------------------|---------|---------------|
|                         |         | DATE          |
| COMPANY                 | CONTACT | PHONE         |
| PROJECT NAME & LOCATION |         | DATE REQUIRED |
| SHIP TO LOCATION        |         | P.O. NUMBER   |



| STANDARD FLUORESCENT LIGHT FIXTURE QUANTITY |       | CANS AND NON STANDARD FLUORESCENT FIXTURE |    |    |          |
|---|-------|---|----|----|----------|
| 2'x4'                                       | 2'x2' | Required Inside Cover Dimensions          |    |    | Quantity |
|   |       | L"  | W" | H" | N.A.     |
|   |       |   |    |    |          |
|   |       |   |    |    |          |
|   |       |   |    |    |          |
|   |       |   |    |    |          |
|   |       |   |    |    |          |
|   |       |   |    |    |          |
|   |       |   |    |    |          |
|   |       |   |    |    |          |
|   |       |   |    |    |          |

1) Std. Cover sizes

2) Custom Covers

3) Important Info

4) Product properties

- 1) Service temp
- 2) Melt point
- 3) R Value
- 4) ASTM E136
- 5) ASTM E84

5) Acoustic Test Data

6) UL Design Listings

- When ordering can light or non standard fluorescent covers provide accurate fixture dimensions. Include specific manufacturer required air space clearance for non IC rated lights to ensure correct SafeLite sizing.
- All covers are produced as 5 sided unless specified otherwise.
- Typical lead time 7-10 days ARO.
- It is the installer's responsibility to review specific U.L. ceiling design and prepare any vent opening.

**SafeLite (mineral wool board, faced) Physical Properties:**  
 Maximum service temperature: 1200°F  
 Melt point: > 2000°F

**Thermal Resistance:**  
 ASTM C 518 (C177) R value/inch @ 75°F: 4.2 (R value 5.25 @ 1-1/4" thick)

**Fire Performance:**  
 ASTM E 136 Behavior of Materials at 750° C (1382 °F): Non-Combustible  
 ASTM E 84 Surface Burning Characteristics: Flame Spread 25  
 Smoke Developed 0

SafeLite covers are fabricated from material which is approved for use by the New York City Dept. of Building, Report of Materials and Equipment Acceptance Division under MEA 210-82-M Vol. 2.

**Acoustical Performance:**  
 ASTM C 423: NRC = 1.00 at 2" thick  
 ASTM E 1414 CAC: Two Room Transmission Loss, AL 20 (TM 418)  
 1.) A high performance ceiling no light fixtures, CAC 44  
 2.) The same ceiling with 2-2x4 light fixtures, CAC 41  
 3.) The same ceiling with SafeLite on the 2x4 light fixtures, CAC 45 (A 4db improvement over unprotected lights).  
 Note: A 3db (decibel) change sounds half as loud as the original noise.

SafeLite is classified by Underwriters Laboratories, Inc. for use in the fire rated floor and roof-ceiling designs listed below:  
 Floor-Ceiling Designs: Design Nos. D010, D216, D219, G230, G234, G258, G523, G526, J202 and L006  
 Roof-Ceiling Designs: Design Nos. P207, P228, P230, P237 and P267

**Disclaimer and Limitation of Warranty:** The purchaser/user is advised to consult with the appropriate professionals and to read the manufacturer's product information to determine the adequacy or appropriateness of the product for the use intended. SPI makes no claim or representation regarding the use or applicability of the products. Further, SPI makes no warranty, expressed or implied, and disclaims all warranties including warranties of merchantability and fitness for a particular purpose.



**SPI Specialty Products & Insulation**  
 c/o Dune Point Capital  
 411 Theodore Fremd Ave.  
 Rye, NY 10580  
 Phone: (855) 519-4044  
 Web: [www.spi-co.com](http://www.spi-co.com)  
 Email: [fabteam@spi-co.com](mailto:fabteam@spi-co.com)  
 Nov 2018 - SafeLite

For additional information please visit  
<http://www.spi-co.com>  
 Please ask your Sales Representative about our other fabrication products and services.





Products & Services

- [C & I Insulation](#)
- [GSD](#)
- [Fabricated](#)
- [OEM](#)
- [Marine](#)
- [Fire Protection](#)
- [Acoustical](#)
- [Specialty](#)
- [Manufacturing Partners](#)
- [Product Data Sheets](#)

## SafeLite® Fire, Sound Blocking and Energy Saving Fixture Covers

### SPI SafeLite® Benefits Include:

- The only UL Certified enclosure to fit virtually any size light or speaker with up to 3 hour fire protection.
- Documented sound blocking greatly improving speech privacy and unwanted sound transmission, critical for sound proofing efforts.
- Lightweight (~ 12 pounds for a 2' x 4' light fixture).
- Quick and easy to install saving considerable time and expense.
- Supplied peel and stick insulation pins ensure covers stay in place.
- SafeLite® has an effective R value of 5.4 at at 75(°F), reducing heating and cooling costs.
- No need to disconnect power cables from fixtures, saving time, money and reducing disruption.
- Easily slit to accommodate fixture power or ceiling suspension wires.
- Supplied insulation pins maintain fixture air spacing.
- No maintenance required.
- Made from natural materials with a minimum of 70% recycled content.



### More Information on SafeLite®

- [SafeLite® Data Sheet](#)
- [Additional SafeLite® Information](#)
- [SafeLite® Order Form](#)
- [SafeLite Product Specifications](#)
- [SafeLite® Installation Instructions](#)
- [Code Requirements](#)
- [SafeLite® Case History \(Laney\)](#)
- [SafeLite® Case History \(Forever 21\)](#)
- [UL SafeLite Certification Listings - US](#)
- [UL SafeLite Certification Listings - Canada](#)



Find us in

# MasterSpec®

a product of The American Institute of Architects



Learn more at [www.spi-co.com](http://www.spi-co.com)

Find SafeLite in MasterSpec & BSD SpecLink

---

Questions  
Contact: [Fabteam@spi-co.com](mailto:Fabteam@spi-co.com)  
Or call (855) 519-4044

