



Pamrod Products Company

Our HATS® are turning heads at Elk Premium Roofing

Recognizing how inefficient, cumbersome and wasteful the method of field cutting flat block to insulate vessel heads was, Jon Hall of J.C. Hall Company tried Pamrod HATS (Highly Advanced Thermal Systems) to insulate the semi-elliptical and dished

again consider field fabricating insulation for a tank head. It takes too long and it's too inefficient."

Because of the flammable nature of the 450° - 550° Fahrenheit hot oil, thermal oil and asphalt flowing through the piping and equipment of

"You'd be a fool not to use Pamrod heads. I will never again consider field fabricating insulation for a tank head."

heads of the Elk Premium Roofing shingle plant in Myerstown, PA.

The result was an easy, efficient and cost-effective success. In fact, Hall attests, "You'd be a fool not to use Pamrod heads. I will never

the Elk shingle plant, Pittsburgh Corning Foamglas® insulation was specified. With that, Hall's team insulated an 8-foot diameter 2:1 elliptical head with two layers of 2-inch thick Foamglas in less than half the time it would have

taken them to field cut flat block.

That's pretty remarkable considering the installers were first-time users of Pamrod HATS – imagine how quickly

CASE STUDY

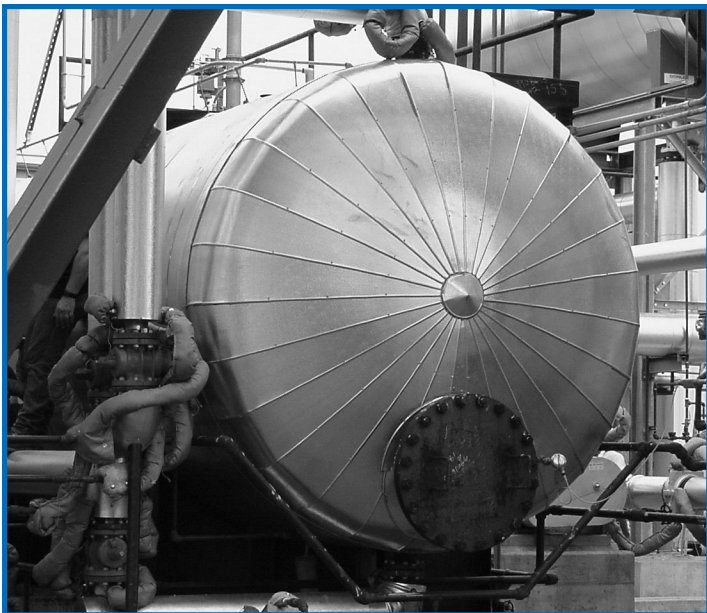
Project:
Elk Premium Roofing
Myerstown, PA

Insulation Contractor:
Jon C. Hall
J.C. Hall Company, Inc.
Soda Springs, ID



Custom-engineered HATS save contractors time, money and effort.

Hall's experienced team and other seasoned installers of Pamrod HATS must install subsequent HATS! Part of what makes Pamrod HATS so easy to install is its numbering system. Installed in concentric circles, each HATS segment is individually numbered and machined on all 6 sides to ensure a precise



Metal finishes lie smoothly and uniformly when Pamrod HATS are installed underneath.





Pamrod Products Company

Our HATS® are turning heads at Elk Premium Roofing

fit. As a matter of fact, the custom-engineering of HATS is so precise that they will fit all standard pressure vessel heads, including:

- 2:1 elliptical
- ASME flanged & dished
- Conical or toriconical
- Hemispherical
- Single radius
- 80-10® heads

Depending upon the needs of your project, HATS are available in a variety of materials, such as:

- cellular glass
- expanded perlite
- polyisocyanurate
- polystyrene
- phenolic foam



Installed in concentric circles, Pamrod HATS segments are numbered for easy installation.



Vessel heads with heat tracing lines present an insulation challenge that can be overcome with Pamrod HATS.

Pamrod HATS not only save time and money in single layer installations, but they also save even more time and more money in double layer installations and jacketed finishes. The reason is simple: Pamrod HATS fit so precisely that there is no need to smooth out imperfections in between layers. The alternative method, however, demands sanding for surface uniformity.

Hence, Pamrod HATS will save you time, money, effort and scrap, and your finished vessel head will look better

and require less labor than its field cut counterpart. What's more, the quality, performance and efficiency of Pamrod HATS is second to none. For more information on Pamrod HATS and other products, please call 830.372.1500.



Pamrod Products Company
2511 Heideke
Seguin, TX 78155
830.372.1500
Fax: 830.372.4233
www.spi-co.com
pamrod@spi-co.com

Disclaimer and Limitation of Warranty: The purchaser/user is advised to consult with the appropriate professionals and to read the manufacturer's product information to determine the adequacy or appropriateness of the product for the use intended. SPI makes no claim or representation regarding the use or applicability of the products. Further, SPI makes no warranty, expressed or implied, and disclaims all warranties including warranties of merchantability and fitness for a particular purpose.

a division of 